

LC3A (ANT0030R) Rabbit mAb

CatalogNo: ANT8072 **Recombinant** 

Formulation: PBS,50%glycerol,0.05%Proclin 300,0.05%BSA
Quantity : 100 ug/vial

Host Species

- Rabbit
- Human,Mouse,Rat,

Reactivity

- WB,IHC,IF,IP,ELISA

Applications

MW

- 14kD (Calculated)
- 16kD (Observed)

Isotype

- IgG,Kappa

Recommended Dilution Ratios

IHC 1:200-1:1000

WB 1:1000-1:5000

IF 1:200-1:1000

ELISA 1:5000-1:20000

IP 1:50-1:200,

Storage

Storage* -15°C to -25°C/1 year(Do not lower than -25°C)

Basic Information

Clonality Monoclonal

Clone Number ANT0030R

Target Information

Endogenous

Gene name MAP1LC3A
Protein Name LC3A

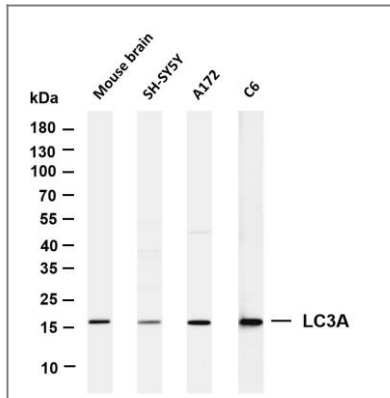
Organism	Gene ID	UniProt ID
Human	84557 ;	Q9H492 ;
Mouse		Q91VR7 ;
Rat		Q6XVN8 ;

Cellular Localization Cytoplasm

Tissue specificity Most abundant in heart, brain, liver, skeletal muscle and testis but absent in thymus and peripheral blood leukocytes.

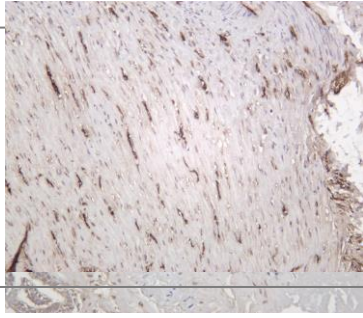
Function Function:Probably involved in formation of autophagosomal vacuoles (autophagosomes).,ANTM:The precursor molecule is cleaved by APG4B/ATG4B to form the cytosolic form, LC3-I. This is activated by APG7L/ATG7, transferred to ATG3 and conjugated to phospholipid to form the membrane-bound form, LC3-II.,similarity:Belongs to the MAP1 LC3 family.,subcellular location:LC3-II binds to the autophagic membranes.,subunit:3 different light chains, LC1, LC2 and LC3, can associate with MAP1A and MAP1B proteins.,tissue specificity:Most abundant in heart, brain, liver, skeletal muscle and testis but absent in thymus and peripheral blood leukocytes.,

Validation Data

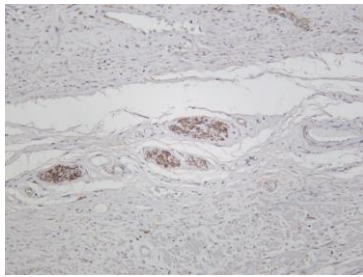


Various whole cell lysates were separated by 4-20% SDS-PAGE, and the membrane was blotted with anti-LC3A (ANT0030R) antibody. The HRPconjugated Goat anti-Rabbit IgG(H + L) antibody was used to detect the antibody. Lane 1: Mouse brain Lane 2: SH-SY5Y Lane 3: A172 Lane 4: C6

Predicted band size: 14kDa Observed band size: 16kDa



Mouse prostate was stained with anti-LC3A (ANT0030R) rabbit antibody
Rat colon was stained with anti-LC3A (ANT0030R) rabbit antibody



Human prostate was stained with anti-LC3A (ANT0030R) rabbit antibody

For Research use only, not for diagnostics and clinical use
Contact Antagene Inc Tel 1-866-964-2589 Email: info@antageneinc.com