



Mouse Monoclonal Antibody **LC3A** conjugated to Sepharose Beads

CatalogNo: **ANT8072-S**

Size 200ul

Storage Store at 4 °C for frequent use

### Description

This Antagene antibody is immobilized via covalent binding of primary amino groups to N-hydroxysuccinimide (NHS)-activated sepharose beads. It is useful for immunoprecipitation assays.

**LC3A (ANT0030R) Rabbit mAb**

Formulation: 50% slurry in PBS pH 7.2 with 0.01mg NaN<sub>3</sub> preservative.

### Host Species

- Rabbit
- Human, Mouse, Rat,

### Reactivity

- WB, IHC, IF, IP, ELISA

### Applications

### MW

- 14kD (Calculated)
- 16kD (Observed)

### Isotype

- IgG, Kappa

## Recommended Dilution Ratios

### IP

## Basic Information

### Clonality

Monoclonal

Clone Number      ANT0030R

**Immunogen Information** Specificity

Endogenous

Gene name      MAP1LC3A  
Protein Name    LC3A

Organism	Gene ID	UniProt ID
Human	<a href="#">84557</a> ;	<a href="#">Q9H492</a> ;
Mouse		<a href="#">Q91VR7</a> ;
Rat		<a href="#">Q6XVN8</a> ;

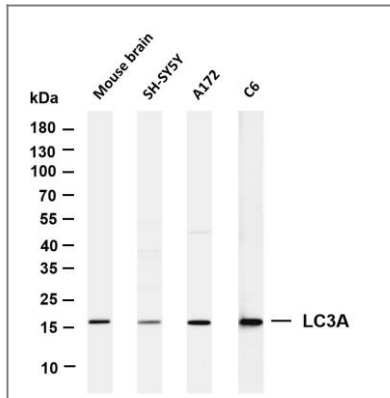
Cellular      Cytoplasm  
Localization

Tissue specificity Most abundant in heart, brain, liver, skeletal muscle and testis but absent in thymus and peripheral blood leukocytes.

Function      Function:Probably involved in formation of autophagosomal vacuoles (autophagosomes).,ANTM:The precursor molecule is cleaved by APG4B/ATG4B to form the cytosolic form, LC3-I. This is activated by APG7L/ATG7, transferred to ATG3 and conjugated to phospholipid to form the membrane-bound form, LC3-II.,similarity:Belongs to the MAP1 LC3 family.,subcellular location:LC3-II binds to the autophagic membranes.,subunit:3 different light chains, LC1, LC2 and LC3, can associate with MAP1A and MAP1B proteins.,tissue specificity:Most abundant in heart, brain, liver, skeletal muscle and testis but absent in thymus and peripheral blood leukocytes.,

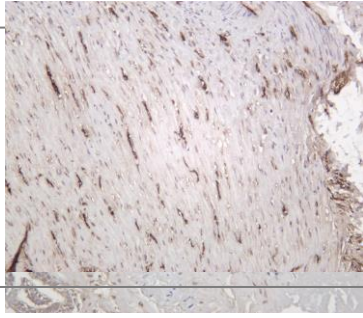


## Validation Data

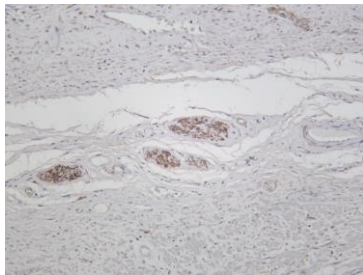


Various whole cell lysates were separated by 4-20% SDS-PAGE, and the membrane was blotted with anti-LC3A (ANT0030R) antibody. The HRPconjugated Goat anti-Rabbit IgG(H + L) antibody was used to detect the antibody. Lane 1: Mouse brain Lane 2: SH-SY5Y Lane 3: A172 Lane 4: C6

Predicted band size: 14kDa Observed band size: 16kDa



Mouse prostate was stained with anti-LC3A (ANT0030R) rabbit antibody  
Rat colon was stained with anti-LC3A (ANT0030R) rabbit antibody



Human prostate was stained with anti-LC3A (ANT0030R) rabbit antibody

For Research use only, not for diagnostics and clinical use  
Contact Antagene Inc Tel 1-866-964-2589 Email: [info@antageneinc.com](mailto:info@antageneinc.com)