



Mouse Monoclonal Antibody **NOX2** conjugated to Sepharose Beads

CatalogNo: **ANT8068-S**

Size 200ul

Storage Store at 4 °C for frequent use

Description

This Antagene antibody is immobilized via covalent binding of primary amino groups to N-hydroxysuccinimide (NHS)-activated sepharose beads. It is useful for immunoprecipitation assays.

NOX2 (ANT0025R) Rabbit mAb

Formulation: 50% slurry in PBS pH 7.2 with 0.01mg NaN₃ preservative.

Host Species

- Rabbit
- Human, Mouse, Rat,

Reactivity

- WB, IP, ELISA

Applications

MW

- 65kD (Calculated)
- 65kD (Observed)
- IgG, Kappa

Isotype

Recommended Dilution Ratios

IP

Basic Information

Clonality	Monoclonal
-----------	------------

Clone Number	ANT0025R
--------------	----------

Immunogen Information

Specificity	Endogenous
-------------	------------

Target Information

Gene name CYBB
Protein Name Cytochrome b-245 heavy chain

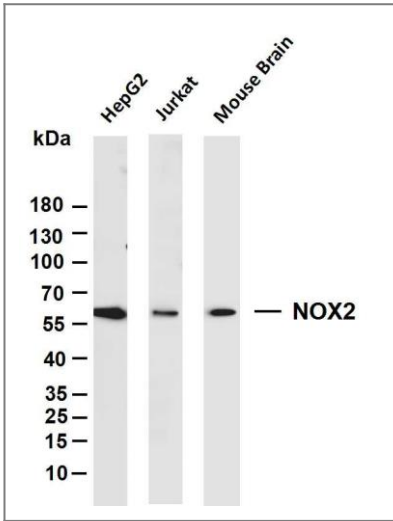
Organism	Gene ID	UniProt ID
Human	1536;	P04839;
Mouse		Q61093;

Cellular Localization Membranous

Tissue specificity Detected in neutrophils (at protein level).

Function cofactor:FAD.,Disease:Defects in CYBB are a cause of chronic granulomatous disease Xlinked (XCGD) [MIM:306400]. Chronic granulomatous disease is a genetically heterogeneous disorder characterized by the inability of neutrophils and phagocytes to kill microbes that they have ingested. Patients suffer from life-threatening bacterial/fungal infections.,Function:Critical component of the membrane-bound oxidase of phagocytes that generates superoxide. It is the terminal component of a respiratory chain that transfers single electrons from cytoplasmic NADPH across the plasma membrane to molecular oxygen on the exterior. Also functions as a voltage-gated proton channel that mediates the H(+) currents of resting phagocytes. It participates in the regulation of cellular pH and is blocked by zinc.,online information:CYBB deficiency database,ANTM:Glycosylated.,similarity:Contains 1 FAD-binding FR-type domain.,similarity:Contains 1 ferric oxidoreductase domain.,subunit:Composed of a heavy chain (beta) and a light chain (alpha).,

Validation Data



Various whole cell lysates were separated by 4-20% SDS-PAGE, and the membrane was blotted with anti-NOX2 (ANT0025R) antibody. The HRPconjugated Goat anti-Rabbit IgG(H + L) antibody was used to detect the antibody. Lane 1: HepG2 Lane 2: Jurkat Lane 3: Mouse Brain Predicted band size: 65kDa Observed band size: 65kDa

For Research use only, not for diagnostics and clinical use
Contact Antagene Inc Tel 1-866-964-2589 Email: info@antageneinc.com