



Mouse Monoclonal Antibody **CD8 α** conjugated to Sepharose Beads

CatalogNo: **ANT8067-S**

Size 200ul

Storage Store at 4 °C for frequent use

Description

This Antagene antibody is immobilized via covalent binding of primary amino groups to N-hydroxysuccinimide (NHS)-activated sepharose beads. It is useful for immunoprecipitation assays.

CD8 α (ANT0017R) Rabbit mAb

Formulation: 50% slurry in PBS pH 7.2 with 0.01mg NaN₃ preservative.

Host Species

- Rabbit
- Human, Mouse, Rat,

Reactivity

- WB, IHC, IF, IP, ELISA

Applications

MW

- 26kD (Calculated)
 - IgG, Kappa
- 35kD (Observed)

Isotype

Recommended Dilution Ratios

IP

Basic Information

Clonality

Monoclonal

Clone Number ANT0017R

Immunogen Information Specificity

Endogenous

Gene name CD8A MAL

Protein Name CD8 a

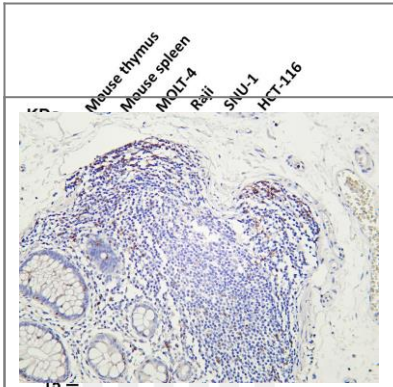
	Organism	Gene ID	UniProt ID
	Human	925;	P01732;

Cellular Localization Membranous

Tissue specificity CD8 on thymus-derived T-cells usually consists of a disulfide-linked alpha/CD8A and a beta/CD8B chain. Less frequently, CD8 can be expressed as a CD8A homodimer. A subset of natural killer cells, memory T-cells, intraepithelial lymphocytes, monocytes and dendritic cells expresses CD8A homodimers. Expressed at the cell surface of plasmacytoid dendritic cells upon herpes simplex virus-1 stimulation.

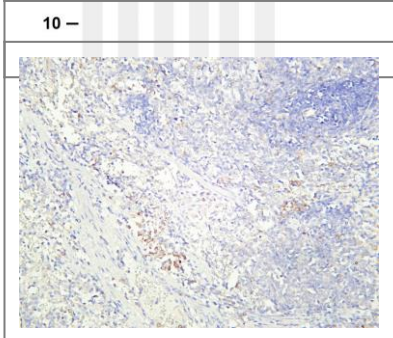
Function Disease:Defects in CD8A are a cause of familial CD8 deficiency (CD8 deficiency) [MIM:608957]. Familial CD8 deficiency is a novel autosomal recessive immunologic defect characterized by absence of CD8+ cells, leading to recurrent bacterial infections.,Function:Identifies cytotoxic/suppressor T-cells that interact with MHC class I bearing targets. CD8 is thought to play a role in the process of T-cell mediated killing. CD8 alpha chains binds to class I MHC molecules alpha-3 domains.,online information:CD8 entry,online information:CD8A mutation db,ANTM:All of the five most carboxyl-terminal cysteines form inter-chain disulfide bonds in dimers and higher multimers, while the four Nterminal cysteines do not.,similarity:Contains 1 Ig-like V-type (immunoglobulin-like) domain.,subunit:In general heterodimer of an alpha and a beta chain linked by two disulfide bonds. Can also form homodimers. Shown to be expressed as heterdimer on thymocytes and as homodimer on peripheral blood T-lymphocytes. Interacts with the MHC class I HLA-A/B2M dimer. Interacts with LCK in a zinc-dependent manner.,

Validation Data

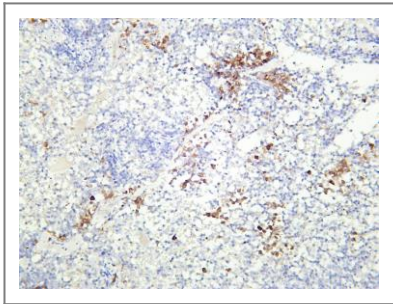


Various whole cell lysates were separated by 4-20% SDS-PAGE, and the membrane was blotted with anti-CD8 α (ANT0017R) antibody. The HRPconjugated Goat anti-Rabbit IgG(H + L) antibody was used to detect the antibody. Lane 1: Mouse thymus Lane 2: Mouse spleen Lane 3: MOLT-4 Lane 4: Raji Lane 5: SNU-1 Lane 6: HCT-116 Predicted band size: 26kDa Observed band size: 35kDa

Human colon was stained with Anti-CD8 α (ANT0017R) rabbit antibody



Rat spleen was stained with Anti-CD8 α (ANT0017R) rabbit antibody



Mouse spleen was stained with Anti-CD8 α (ANT0017R) rabbit antibody

For Research use only, not for diagnostics and clinical use
Contact Antagene Inc Tel 1-866-964-2589 Email: info@antageneinc.com