

## IFITM3 (ANT0014R) Rabbit mAb

CatalogNo: ANT8066 **Recombinant** 

Formulation: PBS,50%glycerol,0.05%Proclin 300,0.05%BSA  
Quantity : 100 ug/vial

### Host Species

- Rabbit
- Human,Mouse,Rat,

### Reactivity

- WB,IHC,IF,IP,ELISA

### Applications

### MW

- 14kD (Calculated)
  - IgG,Kappa
- 14kD (Observed)

### Isotype

## Recommended Dilution Ratios

IHC 1:200-1000

WB 1:1000-5000

IF 1:200-1000

ELISA 1:5000-20000

IP 1:50-200

## Storage

**Storage\*** -15°C to -25°C/1 year(Do not lower than -25°C)

## Basic Information

**Clonality** Monoclonal

**Clone Number** ANT0014R

## Target Information

Immunogen Information

Specificity

Endogenous

Gene name

IFITM3

Protein Name

Interferon-induced transmembrane protein 3

Organism	Gene ID	UniProt ID
Human	<a href="#">10410</a> ;	<a href="#">Q01628</a> ;
Mouse		<a href="#">Q9CQW9</a> ;

Cellular

Membranous

Localization

Tissue specificity

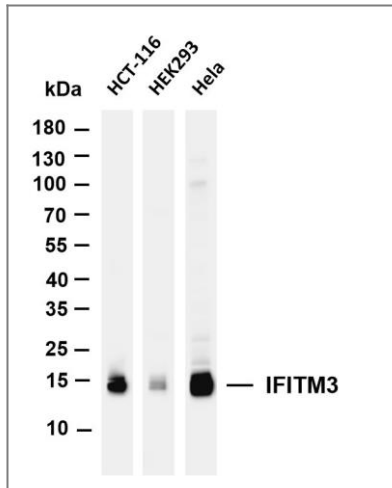
Brain,Cervix,Vascular endothelial cell,

Function

induction:By alpha and gamma interferons.,similarity:Belongs to the CD225 family.,

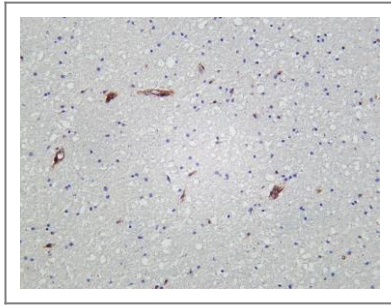


## Validation Data



Various whole cell lysates were separated by 4-20% SDS-PAGE, and the membrane was blotted with anti-IFITM3 (ANT0014R) antibody. The HRPconjugated Goat anti-Rabbit IgG(H + L) antibody was used to detect the antibody. Lane 1: HCT-116 Lane 2: HEK293 Lane 3: HeLa Predicted band size: 14kDa Observed band size: 14kDa

Human brain was stained with Anti-IFITM3 (ANT0014R) rabbit antibody



---

For Research use only, not for diagnostics and clinical use  
Contact Antagene Inc Tel 1-866-964-2589 Email: [info@antageneinc.com](mailto:info@antageneinc.com)