



Mouse Monoclonal Antibody IFITM3 conjugated to Sepharose Beads

CatalogNo: **ANT8066-S**

Size 200ul

Storage Store at 4 °C for frequent use

Description

This Antagene antibody is immobilized via covalent binding of primary amino groups to N-hydroxysuccinimide (NHS)-activated sepharose beads. It is useful for immunoprecipitation assays.

IFITM3 (ANT0014R) Rabbit mAb

Formulation: 50% slurry in PBS pH 7.2 with 0.01mg NaN₃ preservative.

Host Species

- Rabbit
- Human, Mouse, Rat,

Reactivity

- WB, IHC, IF, IP, ELISA

Applications

MW

- 14kD (Calculated)
 - IgG, Kappa
- 14kD (Observed)

Isotype

Recommended Dilution Ratios

IP

Basic Information

Clonality	Monoclonal
-----------	------------

Clone Number	ANT0014R
--------------	----------

Immunogen Information

Specificity

Endogenous

Gene name

IFITM3

Protein Name

Interferon-induced transmembrane protein 3

Organism	Gene ID	UniProt ID
Human	10410 ;	Q01628 ;
Mouse		Q9CQW9 ;

Cellular

Membranous

Localization

Tissue specificity

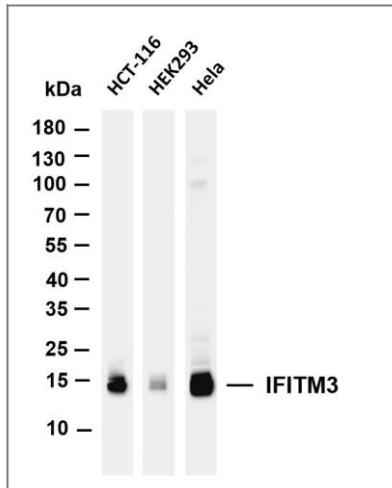
Brain,Cervix,Vascular endothelial cell,

Function

induction:By alpha and gamma interferons.,similarity:Belongs to the CD225 family.,

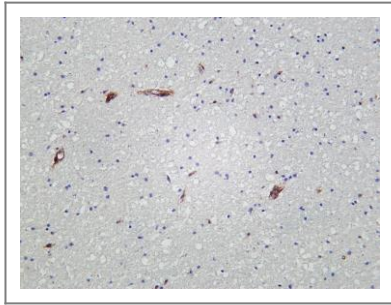


Validation Data



Various whole cell lysates were separated by 4-20% SDS-PAGE, and the membrane was blotted with anti-IFITM3 (ANT0014R) antibody. The HRPconjugated Goat anti-Rabbit IgG(H + L) antibody was used to detect the antibody. Lane 1: HCT-116 Lane 2: HEK293 Lane 3: HeLa Predicted band size: 14kDa Observed band size: 14kDa

Human brain was stained with Anti-IFITM3 (ANT0014R) rabbit antibody



For Research use only, not for diagnostics and clinical use
Contact Antagene Inc Tel 1-866-964-2589 Email: info@antageneinc.com