



CHOP (ANT0005R) Rabbit mAb

CatalogNo: ANT8061 **Recombinant** 

Formulation: PBS,50%glycerol,0.05%Proclin 300,0.05%BSA
Quantity : 100 ug/vial

Host Species

- Rabbit
- Human,Mouse,Rat,

Reactivity

- WB,IHC,IF,IP,ELISA

Applications

MW

- 19kD (Calculated)
 - IgG,Kappa
- 30kD (Observed)

Isotype

Recommended Dilution Ratios

IHC 1:1000-1:4000

WB 1:1000-1:5000

IF 1:200-1:1000

ELISA 1:5000-1:20000

IP 1:50-1:200

Storage

Storage* -15°C to -25°C/1 year(Do not lower than -25°C)

Basic Information

Clonality Monoclonal

Clone Number ANT0005R

Endogenous

Target Information

Gene nameDDIT3

Protein NameDDIT3

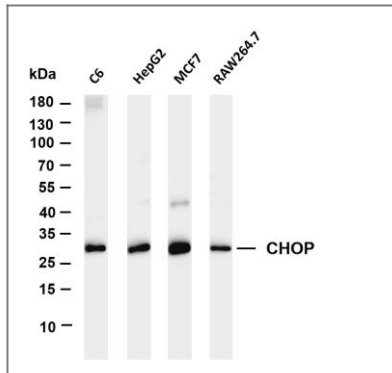
Organism	Gene ID	UniProt ID
Human	1649;	P35638;
Mouse		P35639;
Rat		Q62857;

Cellular
LocalizationCytoplasm, Nucleus

Tissue specificityMuscle,Skeletal muscle,

FunctionDisease:A chromosomal aberration involving DDIT3 is found in a form of malignant myxoid liposarcoma [MIM:126337]. Translocation t(12;16)(q13;p11) with FUS.,Function:Inhibits the DNA-binding activity of C/EBP and LAP by forming heterodimers that cannot bind DNA.,similarity:Belongs to the bZIP family.,similarity:Contains 1 bZIP domain.,subunit:Heterodimer,

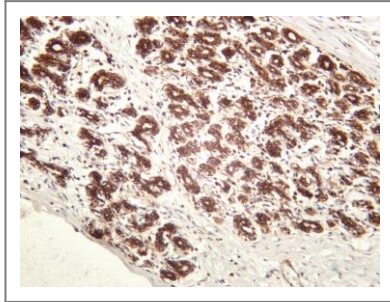
Validation Data



Various whole cell lysates were separated by 4-20% SDS-PAGE, and the membrane was blotted with anti-CHOP (ANT0005R) antibody. The HRPconjugated Goat anti-Rabbit IgG(H + L) antibody was used to detect the antibody. Lane 1: C6 Lane 2: HepG2 Lane 3: MCF7
Predicted band size:

19kDa Observed band size: 30kDa

Human breast carcinoma was stained with anti-CHOP (ANT0005R) rabbit antibody



For Research use only, not for diagnostics and clinical use
Contact Antagene Inc Tel 1-866-964-2589 Email: info@antageneinc.com