



Mouse Monoclonal Antibody **CHOP** conjugated to Sepharose Beads

CatalogNo: **ANT8061-S**

Size 200ul

Storage Store at 4 °C for frequent use

Description

This Antagene antibody is immobilized via covalent binding of primary amino groups to N-hydroxysuccinimide (NHS)-activated sepharose beads. It is useful for immunoprecipitation assays.

CHOP (ANT0005R) Rabbit mAb

Formulation: 50% slurry in PBS pH 7.2 with 0.01mg NaN3a3 preservative.

Host Species

- Rabbit
- Human, Mouse, Rat,

Reactivity

- WB, IHC, IF, IP, ELISA

Applications

MW

- 19kD (Calculated)
- 30kD (Observed)

Isotype

- IgG, Kappa

Recommended Dilution Ratios

IP

Basic Information

Clonality Monoclonal

Clone Number ANT0005R

Endogenous

Target Information

Gene name DDIT3

Protein Name DDIT3

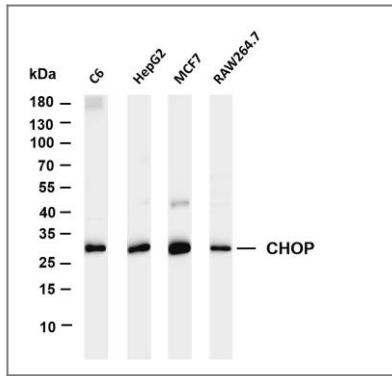
Organism	Gene ID	UniProt ID
Human	1649;	P35638;
Mouse		P35639;
Rat		Q62857;

Cellular Localization Cytoplasm, Nucleus

Tissue specificity Muscle,Skeletal muscle,

Function Disease:A chromosomal aberration involving DDIT3 is found in a form of malignant myxoid liposarcoma [MIM:126337]. Translocation t(12;16)(q13;p11) with FUS.,Function:Inhibits the DNA-binding activity of C/EBP and LAP by forming heterodimers that cannot bind DNA.,similarity:Belongs to the bZIP family.,similarity:Contains 1 bZIP domain.,subunit:Heterodimer.,

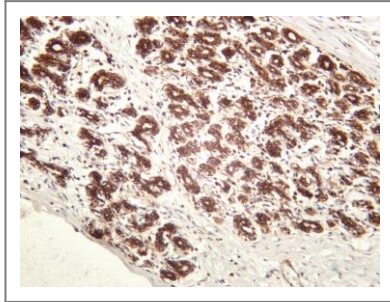
Validation Data



Various whole cell lysates were separated by 4-20% SDS-PAGE, and the membrane was blotted with anti-CHOP (ANT0005R) antibody. The HRPconjugated Goat anti-Rabbit IgG(H + L) antibody was used to detect the antibody. Lane 1: C6 Lane 2: HepG2 Lane 3: MCF7
Predicted band size:

19kDa Observed band size: 30kDa

Human breast carcinoma was stained with anti-CHOP (ANT0005R) rabbit antibody



For Research use only, not for diagnostics and clinical use
Contact Antagene Inc Tel 1-866-964-2589 Email: info@antageneinc.com