



LAMP1 (ANT0004R) Rabbit mAb

CatalogNo: ANT8060 **Recombinant** 

Formulation: PBS,50%glycerol,0.05%Proclin 300,0.05%BSA
Quantity : 100 ug/vial

Host Species

- Rabbit
- Human,
- WB,IHC,IF,IP,ELISA

Reactivity

Applications

MW

- 45kD (Calculated)
 - IgG,Kappa
- 100kD (Observed)

Isotype

Recommended Dilution Ratios

IHC 1:200-1:1000

WB 1:1000-1:5000

IF 1:200-1:1000

ELISA 1:5000-1:20000

IP 1:50-1:200,

Storage

Storage* -15°C to -25°C/1 year(Do not lower than -25°C)

Basic Information

Clonality Monoclonal

Clone Number ANT0004R

Target Information

Endogenous

Gene name LAMP1
Protein Name Lysosome-associated membrane glycoprotein 1

Organism	Gene ID	UniProt ID
Human	3916;	P11279;
Mouse		P11438;
Rat	25328;	P14562;

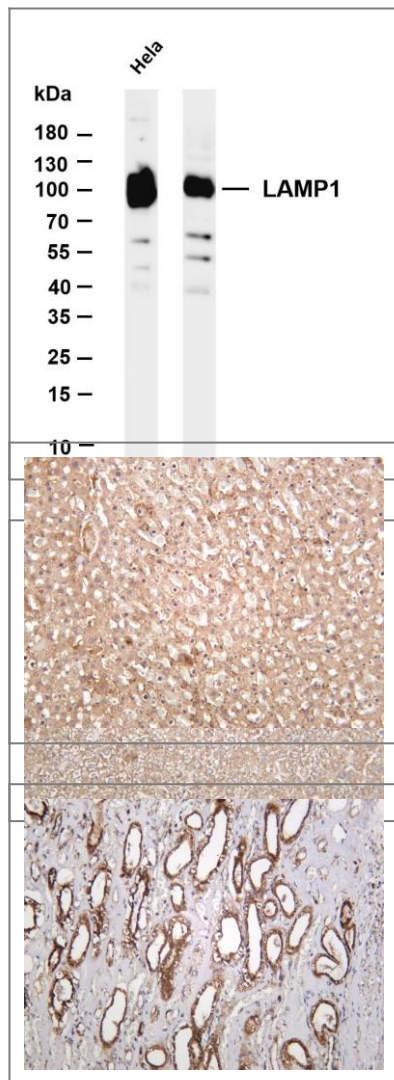
Cellular Localization Membrane

Tissue specificity Brain,Liver,Pancreas,Placenta,Plasma,Testis,

Function Function:Presents carbohydrate ligands to selectins. Also implicated in tumor cell metastasis.,ANTM:O- and N-glycosylated; some of the 18 N-linked glycans are polylactosaminoglycans.,similarity:Belongs to the LAMP family.,subcellular location:This protein shuttles between lysosomes, endosomes, and the plasma membrane.,



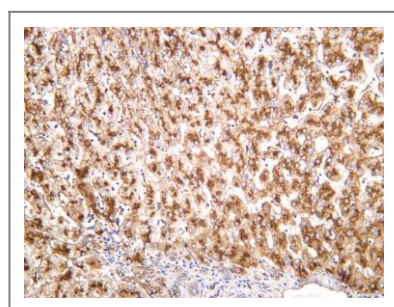
Validation Data



Various whole cell lysates were separated by 4-20% SDS-PAGE, and the membrane was blotted with anti-LAMP1 (ANT0004R) antibody. The HRPconjugated Goat anti-Rabbit IgG(H + L) antibody was used to detect the antibody. Lane 1: Hela Lane 2: Jurkat
Predicted band size: 45kDa Observed band size: 100kDa

Mouse liver was stained with anti-LAMP1 (ANT0004R) rabbit antibody
Rat liver was stained with anti-LAMP1 (ANT0004R) rabbit antibody

Human kidney was stained with anti-LAMP1 (ANT0004R) rabbit antibody



Human liver was stained with anti-LAMP1 (ANT0004R) rabbit antibody

For Research use only, not for diagnostics and clinical use
Contact Antagene Inc Tel 1-866-964-2589 Email: info@antageneinc.com