



Mouse Monoclonal Antibody **LAMP1** conjugated to Sepharose Beads

CatalogNo: **ANT8060-S**

Size 200ul

Storage Store at 4 °C for frequent use

Description

This Antagene antibody is immobilized via covalent binding of primary amino groups to N-hydroxysuccinimide (NHS)-activated sepharose beads. It is useful for immunoprecipitation assays.

LAMP1 (ANT0004R) Rabbit mAb

Formulation: 50% slurry in PBS pH 7.2 with 0.01mg NaN₃ preservative.

Host Species

- Rabbit
- Human,
- WB,IHC,IF,IP,ELISA

Reactivity

Applications

MW

- 45kD (Calculated)
- IgG,Kappa
- 100kD (Observed)

Isotype

Recommended Dilution Ratios

IP

Basic Information

Clonality

Monoclonal

Clone Number ANT0004R

Immunogen Information Specificity

Endogenous

Gene name LAMP1
Protein Name Lysosome-associated membrane glycoprotein 1

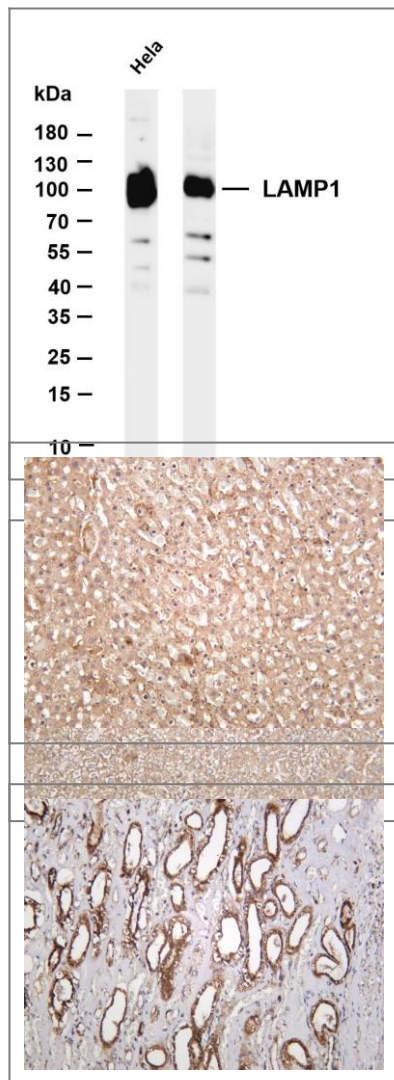
Organism	Gene ID	UniProt ID
Human	3916 ;	P11279 ;
Mouse		P11438 ;
Rat	25328 ;	P14562 ;

Cellular Localization Membrane

Tissue specificity Brain,Liver,Pancreas,Placenta,Plasma,Testis,

Function Function:Presents carbohydrate ligands to selectins. Also implicated in tumor cell metastasis.,ANTM:O- and N-glycosylated; some of the 18 N-linked glycans are polylactosaminoglycans.,similarity:Belongs to the LAMP family.,subcellular location:This protein shuttles between lysosomes, endosomes, and the plasma membrane.,

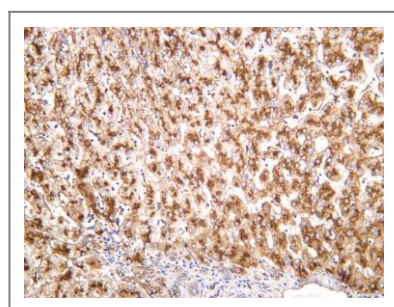
Validation Data



Various whole cell lysates were separated by 4-20% SDS-PAGE, and the membrane was blotted with anti-LAMP1 (ANT0004R) antibody. The HRPconjugated Goat anti-Rabbit IgG(H + L) antibody was used to detect the antibody. Lane 1: Hela Lane 2: Jurkat
Predicted band size: 45kDa Observed band size: 100kDa

Mouse liver was stained with anti-LAMP1 (ANT0004R) rabbit antibody
Rat liver was stained with anti-LAMP1 (ANT0004R) rabbit antibody

Human kidney was stained with anti-LAMP1 (ANT0004R) rabbit antibody



Human liver was stained with anti-LAMP1 (ANT0004R) rabbit antibody

For Research use only, not for diagnostics and clinical use
Contact Antagene Inc Tel 1-866-964-2589 Email: info@antageneinc.com