



## Mouse Monoclonal Antibody **LAMP1** conjugated to Sepharose Beads

CatalogNo: **ANT8060-M**

Size 200ul

Storage Store at 4 °C for frequent use

### Description

This Antagene antibody is immobilized by the covalent reaction of hydrazinonicotinamide-modified antibody with formylbenzamide-modified beads. It is useful for immunoprecipitation.

### **LAMP1 (ANT0004R) Rabbit mAb**

Formulation: Each vial contains 1mg/ml Magnetic Bead in PBS, pH 7.2, 0.05mg ANaN3.

#### Host Species

- Rabbit
- Human,
- WB,IHC,IF,IP,ELISA

#### Reactivity

#### Applications

#### MW

- 45kD (Calculated)
- IgG,Kappa
- 100kD (Observed)

#### Isotype

## **Recommended Dilution Ratios**

### **IP**

## **Basic Information**

#### Clonality

Monoclonal

Clone Number      ANT0004R

**Immunogen Information** Specificity

Endogenous

**Gene name**            LAMP1  
**Protein Name**        Lysosome-associated membrane glycoprotein 1

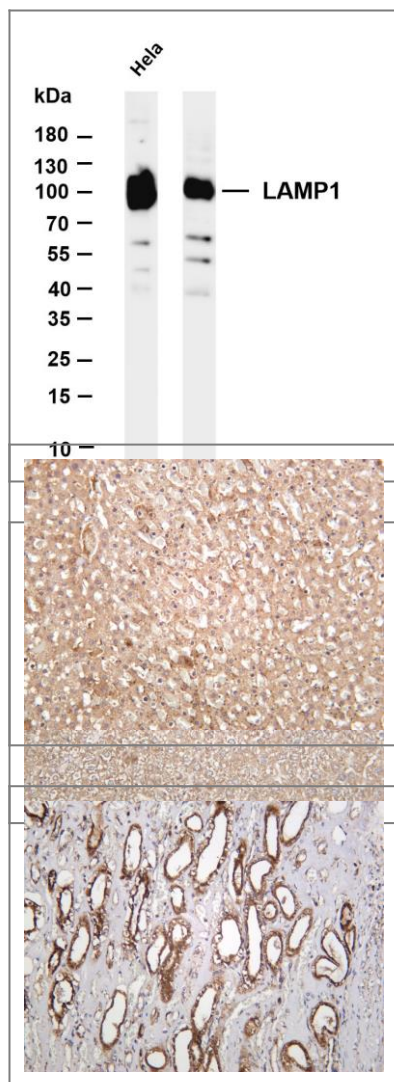
Organism	Gene ID	UniProt ID
Human	<a href="#">3916;</a>	<a href="#">P11279;</a>
Mouse		<a href="#">P11438;</a>
Rat	<a href="#">25328;</a>	<a href="#">P14562;</a>

**Cellular Localization**      Membrane

**Tissue specificity** Brain,Liver,Pancreas,Placenta,Plasma,Testis,

**Function**                    Function:Presents carbohydrate ligands to selectins. Also implicated in tumor cell metastasis.,ANTM:O- and N-glycosylated; some of the 18 N-linked glycans are polylactosaminoglycans.,similarity:Belongs to the LAMP family.,subcellular location:This protein shuttles between lysosomes, endosomes, and the plasma membrane.,

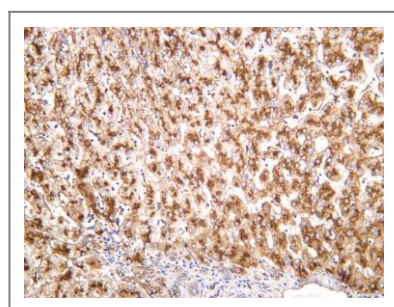
## Validation Data



Various whole cell lysates were separated by 4-20% SDS-PAGE, and the membrane was blotted with anti-LAMP1 (ANT0004R) antibody. The HRPconjugated Goat anti-Rabbit IgG(H + L) antibody was used to detect the antibody. Lane 1: Hela Lane 2: Jurkat  
Predicted band size: 45kDa Observed band size: 100kDa

Mouse liver was stained with anti-LAMP1 (ANT0004R) rabbit antibody  
Rat liver was stained with anti-LAMP1 (ANT0004R) rabbit antibody

Human kidney was stained with anti-LAMP1 (ANT0004R) rabbit antibody



Human liver was stained with anti-LAMP1 (ANT0004R) rabbit antibody

For Research use only, not for diagnostics and clinical use  
Contact Antagene Inc Tel 1-866-964-2589 Email: [info@antageneinc.com](mailto:info@antageneinc.com)