

Mouse Monoclonal Antibody **Nucleolin** conjugated to Sepharose Beads

CatalogNo: **ANT8059-M**

Size 200ul

Storage Store at 4 °C for frequent use

#### Description

This Antagene antibody is immobilized by the covalent reaction of hydrazinonicotinamide-modified antibody with formylbenzamide-modified beads. It is useful for immunoprecipitation.

**Nucleolin (ANT0000R) Rabbit mAb**

Formulation: Each vial contains 1mg/ml Magnetic Bead in PBS, pH 7.2, 0.05mg ANa<sub>3</sub>.

#### Host Species

- Rabbit
- Human, Mouse
- WB, IHC, IF, IP, ELISA

#### Reactivity

#### Applications

#### MW

- 77kD (Calculated)
- 110kD (Observed)
- IgG, Kappa

#### Isotype

## Recommended Dilution Ratios

### IP

## Basic Information

Clonality	Monoclonal
Clone Number	ANT0000R

Endogenous

Gene name NCL  
Protein Name Nucleolin (Protein C23)

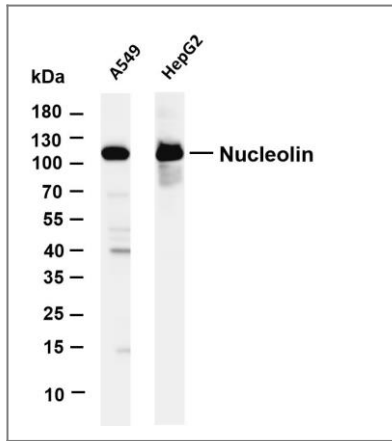
Organism	Gene ID	UniProt ID
Human	<a href="#">4691</a> ;	<a href="#">P19338</a> ;
Mouse		<a href="#">P09405</a> ;
Rat		<a href="#">P13383</a> ;

Cellular Localization Nucleus

Tissue specificity Brain,Cervix carcinoma,Epithelium,Hair follicle dermal papilla,Muscle,Retina,

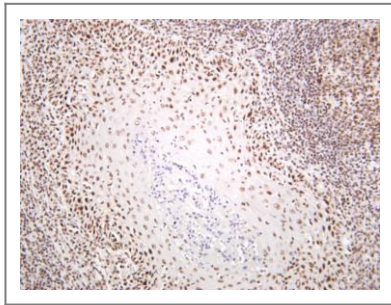
Function: Nucleolin is the major nucleolar protein of growing eukaryotic cells. It is found associated with intranucleolar chromatin and pre-ribosomal particles. It induces chromatin decondensation by binding to histone H1. It is thought to play a role in pre-rRNA transcription and ribosome assembly. May play a role in the process of transcriptional elongation. Binds RNA oligonucleotides with 5'-UUAGGG-3' repeats more tightly than the telomeric single-stranded DNA 5'-TTAGGG-3' repeats.,sequence Caution:Unlikely isoform. Aberrant splice sites.,similarity:Contains 4 RRM (RNA recognition motif) domains.,subunit:Interacts with APTX and NSUN2. Component of the SWAP complex that consists of NPM1, NCL/nucleolin, PARP1 and SWAP70. Component of a complex which is at least composed of HTATSF1/Tat-SF1, the P-TEFb complex components CDK9 and CCNT1, RNA polymerase II, SUPT5H, and NCL/nucleolin.,

## Validation Data



Various whole cell lysates were separated by 4-20% SDS-PAGE, and the membrane was blotted with anti-Nucleolin (ANT0000R) antibody. The HRPconjugated Goat anti-Rabbit IgG(H + L) antibody was used to detect the antibody. Lane 1: A549 Lane 2: HepG2  
Predicted band size: 77kDa Observed band size: 110kDa

Human tonsil was stained with anti-Nucleolin (ANT0000R) rabbit antibody



---

For Research use only, not for diagnostics and clinical use  
Contact Antagene Inc Tel 1-866-964-2589 Email: [info@antageneinc.com](mailto:info@antageneinc.com)