



Mouse Monoclonal Antibody **Lactate Dehydrogenase Isoenzyme V** conjugated to Sepharose Beads

CatalogNo: **ANT8056-S**

Size 200ul

Storage Store at 4 °C for frequent use

Description

This Antagene antibody is immobilized via covalent binding of primary amino groups to N-hydroxysuccinimide (NHS)-activated sepharose beads. It is useful for immunoprecipitation assays.

Lactate Dehydrogenase Isoenzyme V (ANT0096R)

Formulation: 50% slurry in PBS pH 7.2 with 0.01mg NaN₃ preservative.

Host Species

- Rabbit
- Human, Mouse, Rat,

Reactivity

- WB, IHC, IF, IP, ELISA

Applications

MW

- 36kD (Calculated)
- 36kD (Observed)
- IgG, Kappa

Isotype

Recommended Dilution Ratios

IP

Basic Information

Clonality

Monoclonal

Clone Number ANT0096R

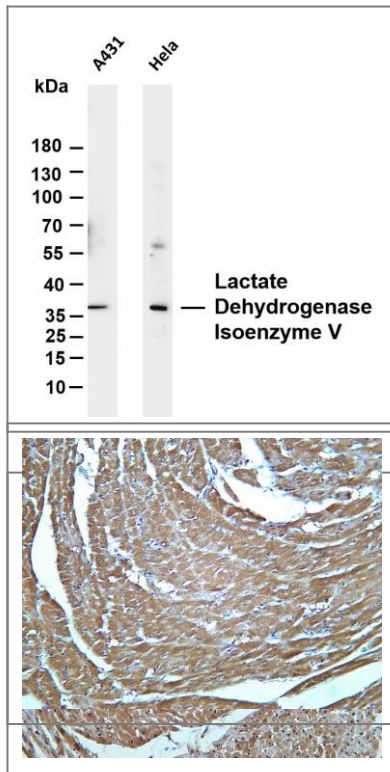
Immunogen Information Specificity

Endogenous

Target Information

Gene name	LDHA PIG19		
Protein Name	L-lactate dehydrogenase A chain (LDH-A) (Cell proliferation-inducing gene 19 protein) (LDH muscle subunit) (LDH-M) (Renal carcinoma antigen NY-REN-59)		
Cellular Localization	Organism	Gene ID	UniProt ID
	Human	3939 ;	P00338 ;
	Mouse		P06151 ;
	Rat		P04642 ;
Cytoplasm			
Tissue specificity	Predominantly expressed in anaerobic tissues such as skeletal muscle and liver.		
Function	Catalytic activity:(S)-lactate + NAD(+) = pyruvate + NADH.,Caution:The sequence shown here is derived from an Ensembl automatic analysis pipeline and should be considered as preliminary data.,Disease:Defects in LDHA are a cause of exertional myoglobinuria.,online information:Lactate dehydrogenase entry,pathway:Fermentation; pyruvate fermentation to lactate; (S)-lactate from pyruvate: step 1/1.,similarity:Belongs to the LDH/MDH superfamily.,similarity:Belongs to the LDH/MDH superfamily. LDH family.,subunit:Homotetramer,		

Validation Data



Various whole cell lysates were separated by 4-20% SDS-PAGE, and the membrane was blotted with anti-Lactate Dehydrogenase Isoenzyme V (ANT0096R) antibody. The HRP-conjugated Goat anti-Rabbit IgG(H + L) antibody was used to detect the antibody. Lane 1: A431 Lane 2: HeLa Predicted band size: 36kDa Observed band size: 36kDa

Rat heart was stained with Anti-Lactate Dehydrogenase Isoenzyme V (ANT0096R) rabbit antibody

Mouse heart was stained with Anti-Lactate Dehydrogenase Isoenzyme V (ANT0096R) rabbit antibody

For Research use only, not for diagnostics and clinical use

Contact Antagene Inc Tel 1-866-964-2589

Email: info@antageneinc.com