



## Mouse Monoclonal Antibody **S6K1** conjugated to Sepharose Beads

CatalogNo: **ANT8055-S**

Size 200ul

Storage Store at 4 °C for frequent use

### Description

This Antagene antibody is immobilized via covalent binding of primary amino groups to N-hydroxysuccinimide (NHS)-activated sepharose beads. It is useful for immunoprecipitation assays.

### **S6K1 (ANT0095R) Rabbit mAb**

Formulation: 50% slurry in PBS pH 7.2 with 0.01mg NaN<sub>3</sub> preservative.

#### Host Species

- Rabbit
- Human, Mouse, Rat,

#### Reactivity

- WB, IHC, IF, IP, ELISA

#### Applications

#### MW

- 75kD (Calculated)
- 70kD (Observed)

#### Isotype

- IgG, Kappa

## Recommended Dilution Ratios

### IP

## Basic Information

**Clonality** Monoclonal

**Clone Number** ANT0095R

## Immunogen Information

**Sequence** Ribosomal protein S6 kinase beta-1

## Target Information

Gene name

>>EGFR tyrosine kinase inhibitor resistance;>>Endocrine resistance;>>ErbB signaling pathway;>>HIF-1 signaling pathway;>>Autophagy - animal;>>mTOR signaling pathway;>>PI3K-Akt signaling pathway;>>AMPK signaling pathway;>>Longevity regulating pathway;>>Longevity regulating pathway - multiple species;>>TGF-beta signaling pathway;>>Apelin signaling pathway;>>Fc gamma R-mediated phagocytosis;>>Thermogenesis;>>Insulin signaling pathway;>>Insulin resistance;>>Shigellosis;>>Human cytomegalovirus infection;>>Human papillomavirus infection;>>Human immunodeficiency virus 1 infection;>>Pathways in cancer;>>Proteoglycans in cancer;>>Chemical carcinogenesis - receptor activation;>>Colorectal cancer;>>Pancreatic cancer;>>Acute myeloid leukemia;>>Breast cancer;>>Hepatocellular carcinoma;>>Gastric cancer;>>Choline metabolism in cancer;>>PD-L1 expression and PD-1 checkpoint pathway in cancer

Protein Name

RPS6KB1

Organism	Gene ID	UniProt ID
Human	<a href="#">6198</a> ;	<a href="#">P23443</a> ;
Mouse	<a href="#">72508</a> ;	<a href="#">Q8BSK8</a> ;
Rat	<a href="#">83840</a> ;	<a href="#">P67999</a> ;

Cellular Localization

Cytoplasm

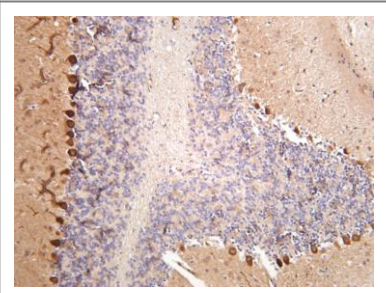
Tissue specificity

Widely expressed.

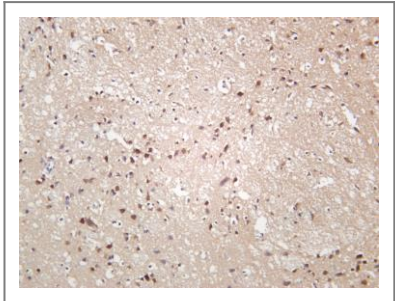
Function

Catalytic activity:ATP + a protein = ADP + a phosphoprotein.,enzyme regulation:Activation by serine/threonine phosphorylation and protein kinase C, inactivated by type 2A phosphatase.,Function:Phosphorylates specifically ribosomal protein S6 in response to insulin or several classes of mitogens.,similarity:Belongs to the protein kinase superfamily.,similarity:Belongs to the protein kinase superfamily. AGC Ser/Thr protein kinase family. S6 kinase subfamily.,similarity:Contains 1 AGC-kinase C-terminal domain.,similarity:Contains 1 protein kinase domain.,subunit:Interacts with PPP1R9A/neurabin-1.,tissue specificity:Widely expressed.,

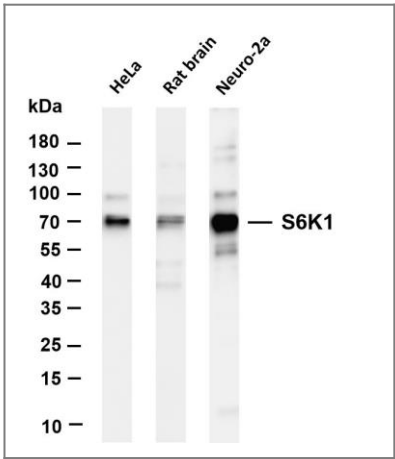
# Validation Data



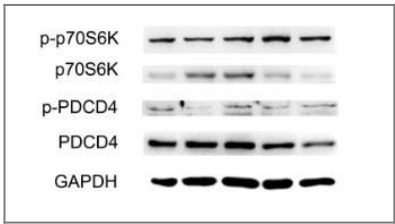
Mouse brain was stained with anti-S6K1 (ANT0095R)



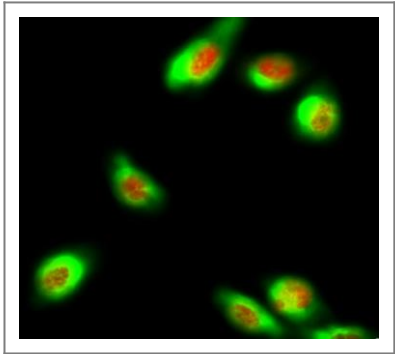
rabbit antibody  
Rat brain was stained with anti-S6K1 (ANT0095R) rabbit antibody



Various whole cell lysates were separated by 4-20% SDS-PAGE, and the membrane was blotted with anti-S6K1 (ANT0095R) antibody. The HRPconjugated Goat anti-Rabbit IgG(H + L) antibody was used to detect the antibody. Lane 1: HeLa Lane 2: Rat brain Lane 3: Neuro-2a Predicted band size: 75kDa Observed band size: 70kDa



Ge, Cheng, et al. "Atheroprotective Pulsatile Flow Induces UbiquitinProteasome– Mediated Degradation of Programmed Cell Death 4 in Endothelial Cells." PloS one 9.3 (2014): e91564.



Immunofluorescence analysis of HeLa cell. 1,p70 S6 kinase α Antibody(red) was diluted at 1:200(4° overnight). CK7 Monoclonal Antibody(12D7)(green) was diluted at 1:200(4° overnight). 2, Goat Anti Rabbit Alexa Fluor 594 Catalog:RS3611 was diluted at 1:1000(room temperature, 50min). Goat Anti Mouse Alexa Fluor 488 Catalog:RS3208 was diluted at 1:1000(room temperature, 50min).

For Research use only, not for diagnostics and clinical use  
Contact Antagene Inc Tel 1-866-964-2589 Email: [info@antageneinc.com](mailto:info@antageneinc.com)