



Chromogranin A (ANT0092R) Rabbit mAb

CatalogNo: ANT8054 **Recombinant R**

Formulation: PBS,50%glycerol,0.05%Proclin 300,0.05%BSA
Quantity : 100 ug/vial

Host Species

- Rabbit
- Human,Mouse,Rat,

Reactivity

- WB,IHC,IF,IP,ELISA

Applications

MW

- 51kD (Calculated)
- 80kD (Observed)
- IgG,Kappa

Isotype

Recommended Dilution Ratios

IHC 1:200-1:1000

WB 1:1000-1:5000

IF 1:200-1:1000

ELISA 1:5000-1:20000

IP 1:50-1:200,

Storage

Storage* -15°C to -25°C/1 year(Do not lower than -25°C)

Basic Information

Clonality Monoclonal

Clone Number ANT0092R

Immunogen Information

Sequence beta Granin;betagranin (N-terminal fragment of chromogranin A);catestatin;CgA;CHG A;Chga;chromofungin;Chromogranin A;Chromogranin A parathyroid secretory protein 1;Chromogranin A precursor;ChromograninA;CMGA_HUMAN;ER-37;Pancreastatin;Parastatin;Parathyroid secretory protein 1;Pituitary secretory protein I;Secretory protein I;SP I;SPI;SP1;SPI;vasostatin 2;Vasostatin;Vasostatin I;Vasostatin II;vasostatin-2

Specificity Endogenous

Target Information

Protein Name CHGA

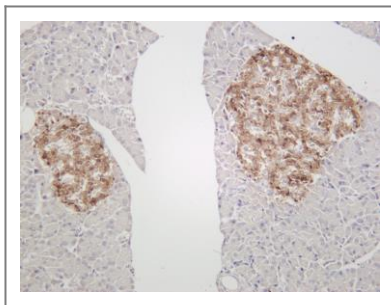
Organism	Gene ID	UniProt ID
Human	1113;	P10645;
Mouse		P26339;
Rat		P10354;

Cellular Localization Secreted

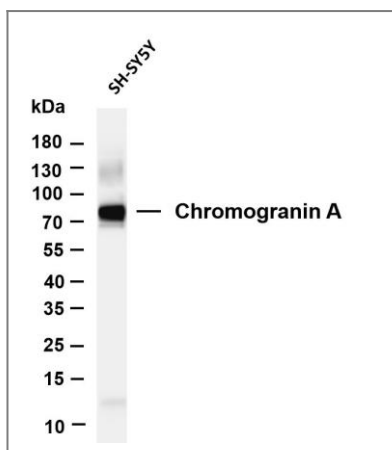
Tissue specificity Pancreas/ stomach

Function Function: Pancreastatin strongly inhibits glucose induced insulin release from the pancreas., miscellaneous: Binds calcium with a low-affinity., ANTM: Sulfated on tyrosine residues and/or contains sulfated glycans., similarity: Belongs to the chromogranin/secretogranin protein family., subcellular location: Neuroendocrine and endocrine secretory granules.,

Validation Data

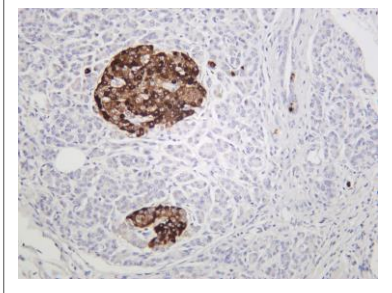


Rat pancreas was stained with anti-Chromogranin A (ANT0092R) rabbit antibody

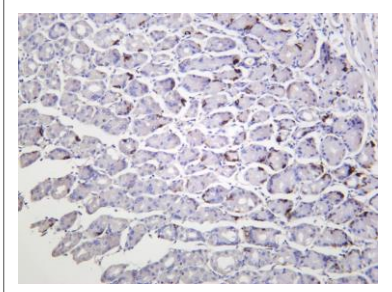


Various whole cell lysates were separated by 4-20% SDS-PAGE, and the membrane was blotted with anti-Chromogranin A (ANT0092R) antibody. The HRP-conjugated Goat anti-Rabbit IgG(H + L) antibody was used to detect the antibody. Lane 1: SH-SY5Y Predicted band size: 51kDa Observed band size:

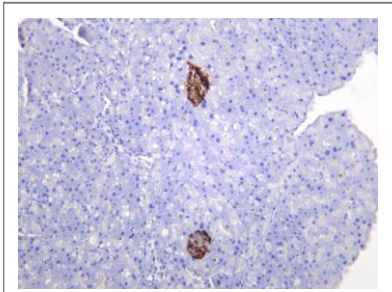
80kDa



Human pancreas was stained with anti-Chromogranin A (PT0092R) rabbit antibody



Human stomach was stained with anti-Chromogranin A (PT0092R) rabbit antibody



Mouse pancreas was stained with anti-Chromogranin A (PT0092R) rabbit antibody

For Research use only, not for diagnostics and clinical use
Contact Antagene Inc Tel 1-866-964-2589 Email: info@antageneinc.com