



Mouse Monoclonal Antibody **Chromogranin A** conjugated to Sepharose Beads

CatalogNo: **ANT8054-S**

Size 200ul

Storage Store at 4 °C for frequent use

Description

This Antagene antibody is immobilized via covalent binding of primary amino groups to N-hydroxysuccinimide (NHS)-activated sepharose beads. It is useful for immunoprecipitation assays.

Chromogranin A (ANT0092R) Rabbit mAb

Formulation: 50% slurry in PBS pH 7.2 with 0.01mg NaN₃ preservative.

Host Species

- Rabbit
- Human, Mouse, Rat,

Reactivity

- WB, IHC, IF, IP, ELISA

Applications

MW

- 51kD (Calculated)
- IgG, Kappa
- 80kD (Observed)

Isotype

Recommended Dilution Ratios

IP

Basic Information

Clonality	Monoclonal
Sequence	beta Granin;betagranin (N-terminal fragment of chromogranin A);catestatin;CgA;CHG A;Chga;chromofungin;Chromogranin A;Chromogranin A parathyroid secretory protein 1;Chromogranin A precursor;ChromograninA;CMGA_HUMAN;ER-37;Pancreastatin;Parastatin;Parathyroid secretory protein 1;Pituitary secretory protein I;Secretory protein I;SP I;SPI;SP1;SPI;vasostatin 2;Vasostatin;Vasostatin I;Vasostatin II;vasostatin-2
Specificity	Endogenous

Clone Number ANT0092R

Immunogen Information

Target Information

Protein Name CHGA

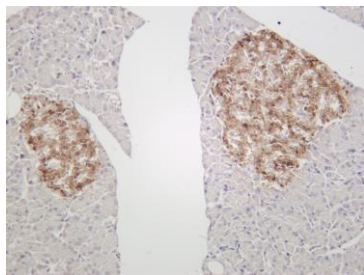
Organism	Gene ID	UniProt ID
Human	1113;	P10645;
Mouse		P26339;
Rat		P10354;

Cellular Localization Secreted

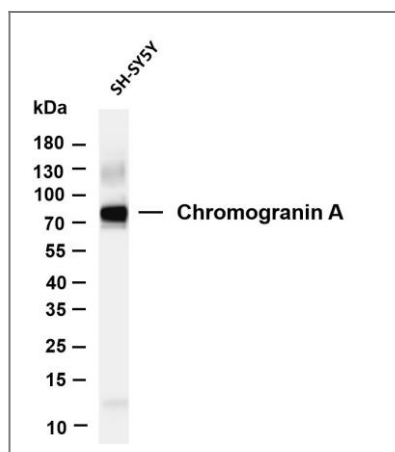
Tissue specificity Pancreas/ stomach

Function Function: Pancreastatin strongly inhibits glucose induced insulin release from the pancreas., miscellaneous: Binds calcium with a low-affinity., ANTM: Sulfated on tyrosine residues and/or contains sulfated glycans., similarity: Belongs to the chromogranin/secretogranin protein family., subcellular location: Neuroendocrine and endocrine secretory granules.,

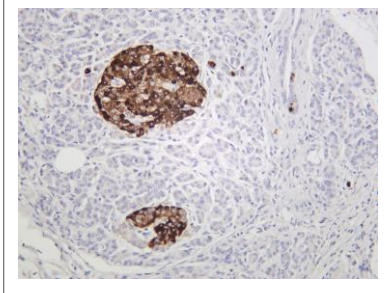
Validation Data



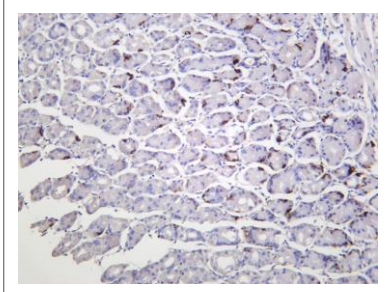
Rat pancreas was stained with anti-Chromogranin A (ANT0092R) rabbit antibody



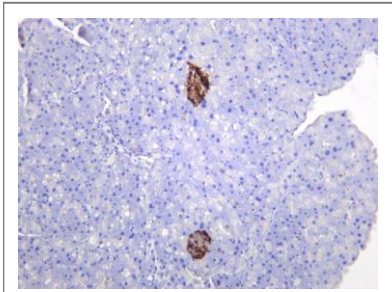
Various whole cell lysates were separated by 4-20% SDS-PAGE, and the membrane was blotted with anti-Chromogranin A (ANT0092R) antibody. The HRP-conjugated Goat anti-Rabbit IgG(H + L) antibody was used to detect the antibody. Lane 1: SH-SY5Y Predicted band size: 51kDa Observed band size: 80kDa



Human pancreas was stained with anti-Chromogranin A (PT0092R) rabbit antibody



Human stomach was stained with anti-Chromogranin A (PT0092R) rabbit antibody



Mouse pancreas was stained with anti-Chromogranin A (PT0092R) rabbit antibody

For Research use only, not for diagnostics and clinical use
Contact Antagene Inc Tel 1-866-964-2589 Email: info@antageneinc.com