



Mouse Monoclonal Antibody **RhoA** conjugated to Sepharose Beads

CatalogNo: **ANT8050-M**

Size 200ul

Storage Store at 4 °C for frequent use

Description

This Antagene antibody is immobilized by the covalent reaction of hydrazinonicotinamide-modified antibody with formylbenzamide-modified beads. It is useful for immunoprecipitation.

RhoA (ANT0088R) Rabbit mAb

Formulation: Each vial contains 1mg/ml Magnetic Bead in PBS, pH 7.2, 0.05mg ANaN3.

Host Species

- Rabbit
- Human, Mouse, Rat,

Reactivity

- WB, IHC, IF, IP, ELISA

Applications

MW

- 21kD (Calculated)
 - IgG, Kappa
- 21kD (Observed)

Isotype

Recommended Dilution Ratios

IP

Basic Information

| | |
|------------------|------------|
| Clonality | Monoclonal |
|------------------|------------|

| | |
|---------------------|----------|
| Clone Number | ANT0088R |
|---------------------|----------|

Endogenous

Gene name RHOA ARH12 ARHA RHO12

Protein Name Rho A

| Organism | Gene ID | UniProt ID |
|----------|-------------------------|-------------------------|
| Human | 387; | P61586; |
| Mouse | 11848; | Q9QUI0; |
| Rat | 117273; | P61589; |

Cellular Localization Cell membrane; Lipid-anchor; Cytoplasmic side. Cytoplasm, cytoskeleton. Cleavage furrow. Cytoplasm, cell cortex . Midbody. Cell projection, lamellipodium . Cell projection, dendrite . Nucleus . Localized to cell-cell contacts in calcium-treated keratinocytes (By similarity). Translocates to the equatorial region before furrow formation in a ECT2-dependent manner. Localizes to the equatorial cell cortex (at the site of the presumptive furrow) in early anaphase in an activated form and in a myosin- and actin-independent manner. .

Tissue specificity Adipose tissue,Brain,Colon,Mammary cancer,Oesophageal carcinoma,Placenta,Re

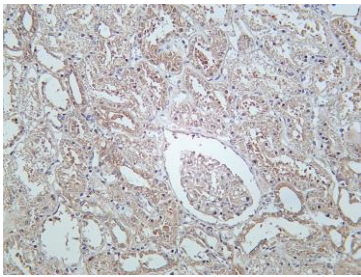
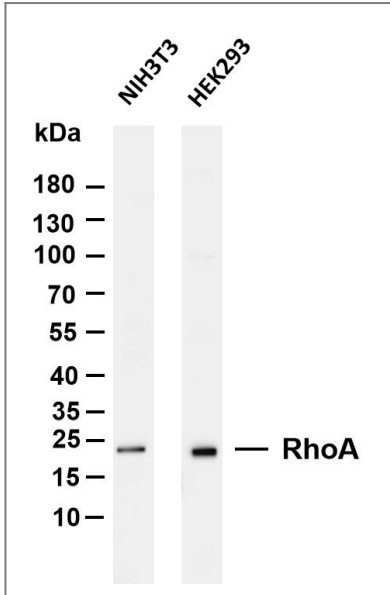
Function cofactor:Magnesium.,Domain:The basic-rich region is essential for yopT recognition and cleavage.,Function:Regulates a signal transduction pathway linking plasma membrane receptors to the assembly of focal adhesions and actin stress fibers. Serves as a target for the yopT cysteine peptidase from Yersinia pestis, vector of the plague, and Yersinia pseudotuberculosis, which causes gastrointestinal disorders. May be an activator of PLCE1. Activated by ARHGEF2, which promotes the exchange of GDP for GTP.,ANTM:Cleaved by yopT protease when the cell is infected by some Yersinia pathogens. This removes the lipid attachment, and leads to its displacement from plasma membrane and to subsequent cytoskeleton cleavage.,PTM:Substrate for botulinum ADPribosyltransferase.,similarity:Belongs to the small GTPase superfamily. Rho family.,subunit:Interacts with RGNEF (By similarity). Binds PRKCL1, ROCK1 and ROCK2. Interacts with ARHGEF2, ARHGEF3, NET1 and RTKN. Interacts with PLCE1 and AKAP13. Interacts with human respiratory syncytial virus (HRSV) protein F; this interaction facilitates virus-induced syncytium formation.,

Validation

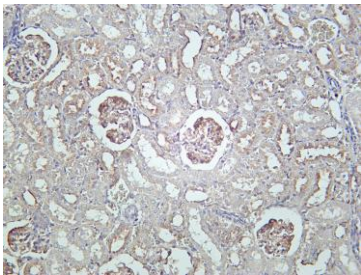
Data

Various whole cell lysates were separated by 4-20% SDS-PAGE, and the membrane was blotted with anti-RhoA (ANT0088R) antibody. The HRPconjugated Goat anti-Rabbit IgG(H + L) antibody was used to detect the antibody. Lane 1: NIH3T3 Lane 2: HEK293 Predicted band size: 21kDa

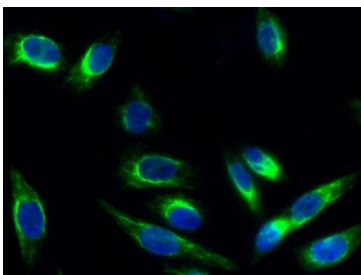
Observed band size: 21kDa



Human kidney was stained with Anti-RhoA (ANT0088R) rabbit Antibody



Rat kidney was stained with Anti-RhoA (ANT0088R) rabbit Antibody



Immunofluorescence analysis of HeLa cell. 1, RhoA rabbit mAb (green) was diluted at 1:200 (4° overnight). 2, Goat Anti Rabbit Alexa Fluor 488 Catalog: RS3211 was diluted at 1:1000 (room temperature, 50min). 3 DAPI (blue) 10min.

For Research use only, not for diagnostics and clinical use
Contact Antagene Inc Tel 1-866-964-2589 Email: info@antageneinc.com