



## Mouse Monoclonal Antibody **SOD2** conjugated to Sepharose Beads

CatalogNo: **ANT8048-M**

Size 200ul

Storage Store at 4 °C for frequent use

### Description

This Antagene antibody is immobilized by the covalent reaction of hydrazinonicotinamide-modified antibody with formylbenzamide-modified beads. It is useful for immunoprecipitation.

### **SOD2 (ANT0085R) Rabbit mAb**

Formulation: Each vial contains 1mg/ml Magnetic Bead in PBS, pH 7.2, 0.05mg ANaN3.

#### Host Species

- Rabbit
- Human, Mouse, Rat,

#### Reactivity

- WB, IHC, IF, IP, ELISA

#### Applications

#### MW

- 25kD (Calculated)
  - IgG, Kappa
- 22kD (Observed)

#### Isotype

## **Recommended Dilution Ratios**

### **IP**

### **Basic Information**

**Clonality** Monoclonal

**Clone Number** ANT0085R

Immunogen Information Specificity

Endogenous

Gene name SOD2  
Protein Name Superoxide dismutase [Mn] mitochondrial

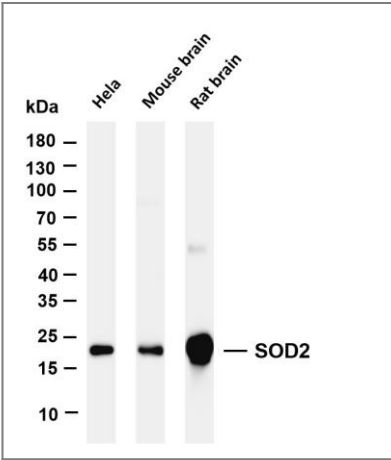
Organism	Gene ID	UniProt ID
Human	<a href="#">6648;</a>	<a href="#">P04179;</a>
Mouse	<a href="#">20656;</a>	<a href="#">P09671;</a>
Rat	<a href="#">24787;</a>	<a href="#">P07895;</a>

Cellular Localization Mitochondrion matrix

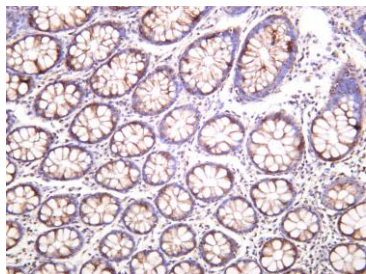
Tissue specificity Brain,Colon,Heart,Liver,Lung,Mammary carcinoma,Tongue,

Function Catalytic activity:2 superoxide + 2 H(+) = O(2) + H(2)O(2).,cofactor:Binds 1 manganese ion per subunit.,Disease:Genetic variation in SOD2 is associated with susceptibility to diabetic nephropathy [MIM:612634]; also called susceptibility to microvascular complications of diabetes type 6 (MVCD6). Diabetic nephropathy is a kidney disease and resultant kidney function impairment due to the long standing effects of diabetes on the microvasculature (glomerulus) of the kidney. Features include increased urine protein and declining kidney function.,Function:Destroys radicals which are normally produced within the cells and which are toxic to biological systems.,online information:Superoxide dismutase entry,online information:The Singapore human mutation and polymorphism database,ANTM:Nitrated under oxidative stress. Nitration coupled with oxidation inhibits the catalytic activity.,similarity:Belongs to the iron/manganese superoxide dismutase family.,subunit:Homotetramer.,

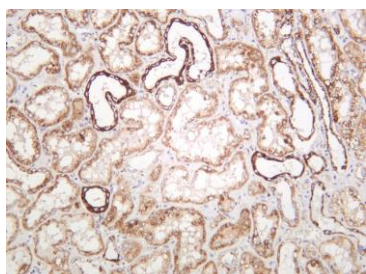
Validation Data



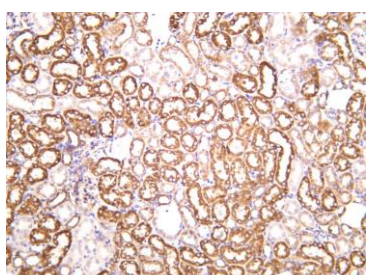
Various whole cell lysates were separated by 4-20% SDS-PAGE, and the membrane was blotted with anti-SOD2 (ANT0085R) antibody. The HRPconjugated Goat anti-Rabbit IgG(H + L) antibody was used to detect the antibody. Lane 1: HeLa Lane 2: Mouse brain Lane 3: Rat brain Predicted band size: 25kDa Observed band size: 22kDa



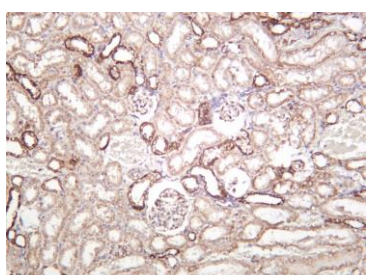
Human colon was stained with anti-SOD2 (ANT0085R) rabbit antibody



Human kidney was stained with anti-SOD2 (ANT0085R) rabbit antibody



Mouse kidney was stained with anti-SOD2 (ANT0085R) rabbit antibody



Rat kidney was stained with anti-SOD2 (ANT0085R) rabbit antibody

For Research use only, not for diagnostics and clinical use  
Contact Antagene Inc Tel 1-866-964-2589 Email: [info@antageneinc.com](mailto:info@antageneinc.com)