



## Mouse Monoclonal Antibody **ACE2** conjugated to Sepharose Beads

CatalogNo: **ANT8047-S**

Size 200ul

Storage Store at 4 °C for frequent use

### Description

This Antagene antibody is immobilized via covalent binding of primary amino groups to N-hydroxysuccinimide (NHS)-activated sepharose beads. It is useful for immunoprecipitation assays.

### **ACE2 (ANT0084R) Rabbit mAb**

Formulation: 50% slurry in PBS pH 7.2 with 0.01mg NaN<sub>3</sub> preservative.

#### Host Species

- Rabbit

#### Reactivity

- Human,

#### Applications

- WB,IHC,IF,IP,ELISA

#### MW

- 130kD (Calculated)  
130kD (Observed)

#### Isotype

- IgG,Kappa

## Recommended Dilution Ratios

### IP

## Basic Information

Clonality	Monoclonal
-----------	------------

Clone Number	ANT0084R
--------------	----------

Endogenous

Target Information

Gene name ACE2 UNQ868/PRO1885

Protein Name ACE2

Organism	Gene ID	UniProt ID
Human	<a href="#">59272</a> ;	<a href="#">Q9BYF1</a> ;
Mouse	<a href="#">70008</a> ;	<a href="#">Q8R0I0</a> ;
Rat	<a href="#">302668</a> ;	<a href="#">Q5EGZ1</a> ;

Cellular Localization Membrane

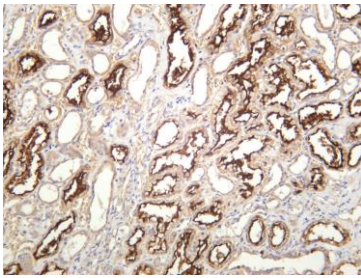
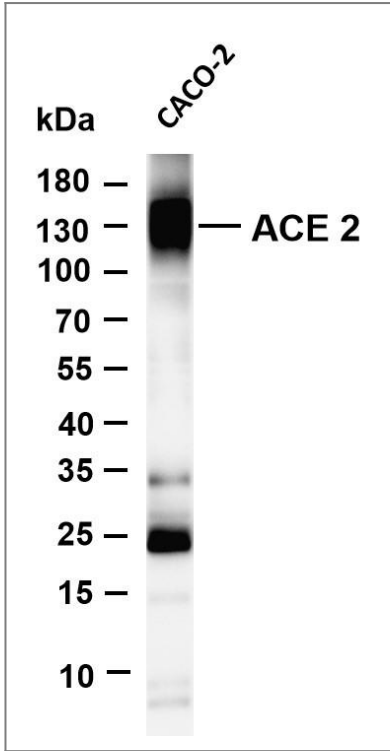
**Tissue specificity** Expressed in endothelial cells from small and large arteries, and in arterial smooth muscle cells (at protein level) (PubMed:15141377). Expressed in enterocytes of the small intestine, Leydig cells and Sertoli cells (at protein level) (PubMed:15141377). Expressed in the renal proximal tubule and the small intestine (at protein level) (PubMed:18424768). Expressed in heart, kidney, testis, and gastrointestinal system (at protein level) (PubMed:10969042, PubMed:10924499, PubMed:15231706, PubMed:12459472, PubMed:15671045, PubMed:32715618, PubMed:32170560). In lung, expressed at low levels in some alveolar type 2 cells, the expression seems to be individual-specific (at protein level) (PubMed:32425701, PubMed:15141377, PubMed:32715618, PubMed:32170560, PubMed:33432184). Expressed in nasal epithelial cells (at protein level) (PubMed:33432184, PubMed:32333915). Coexpressed with TMPRSS2 within some lung alveolar type 2 cells, ileal absorptive enterocytes, intestinal epithelial cells, cornea, gallbladder and nasal goblet secretory cells (PubMed:32413319, PubMed:32327758, PubMed:32358202). Coexpressed with TMPRSS4 within mature enterocytes (PubMed:32404436). ; [Isoform 2]: Expressed in nasal and bronchial epithelial cells (at protein level).

**Function** cofactor: Binds 1 chloride ion per subunit., cofactor: Binds 1 zinc ion per subunit., enzyme regulation: Activated by chloride and fluoride, but not bromide. Inhibited by MLN-4760, cFP\_Leu, and EDTA, but not by the ACE inhibitors lisinopril, captopril and enalaprilat., Function: Carboxypeptidase which converts angiotensin I to angiotensin 1-9, a peptide of unknown function, and angiotensin II to angiotensin 1-7, a vasodilator. Also able to hydrolyze apelin-13 and dynorphin-13 with high efficiency. May be an important regulator of heart function. In case of human coronaviruses SARS and HCoV-NL63 infections, serve as functional receptor for the spike glycoprotein of both coronaviruses., induction: Up-regulated in failing heart., ANTM: N-glycosylation on Asn-90 may limit SARS infectivity., similarity: Belongs to the peptidase M2 family., subunit: Interacts with ITGB1. Interacts with SARS-CoV and HCoV-NL63 spike glycoprotein., tissue specificity: Expressed in endothelial cells from small and large arteries, and in arterial smooth muscle cells. Expressed in lung alveolar epithelial cells, enterocytes of the small intestine, Leydig cells and Sertoli cells (at protein level). Expressed in heart, kidney, testis, and gastrointestinal system.,

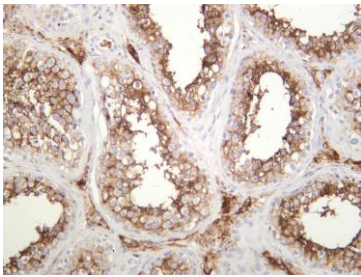
## Validation

### Data

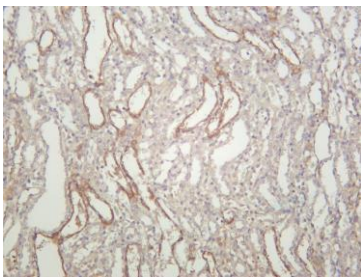
Various whole cell lysates were separated by 4-20% SDS-PAGE, and the membrane was blotted with anti-ACE2 (ANT0084R) antibody. The HRPconjugated Goat anti-Rabbit IgG(H + L) antibody was used to detect the antibody. Lane 1: CACO-2 Predicted band size: 130kDa Observed band size: 130kDa



Human kidney was stained with anti-ACE2 (ANT0084R) rabbit antibody



Human testis was stained with anti-ACE2 (ANT0084R) rabbit antibody



Rat kidney was stained with anti-ACE2 (ANT0084R) rabbit antibody

---

For Research use only, not for diagnostics and clinical use  
Contact Antagene Inc Tel 1-866-964-2589 Email: [info@antageneinc.com](mailto:info@antageneinc.com)