



Mouse Monoclonal Antibody **Rad51** conjugated to Sepharose Beads

CatalogNo: **ANT8046-S**

Size 200ul

Storage Store at 4 °C for frequent use

Description

This Antagene antibody is immobilized via covalent binding of primary amino groups to N-hydroxysuccinimide (NHS)-activated sepharose beads. It is useful for immunoprecipitation assays.

Rad51 (ANT0083R) Rabbit mAb

Formulation: 50% slurry in PBS pH 7.2 with 0.01mg NaN3a3 preservative.

Host Species

- Rabbit
- Human, Mouse, Rat,

Reactivity

- WB, IF, IP, ELISA

Applications

MW

- 37kD (Calculated)
- 37kD (Observed)
- IgG, Kappa

Isotype

Recommended Dilution Ratios

IP

Basic Information

Clonality	Monoclonal
-----------	------------

Clone Number	ANT0083R
--------------	----------

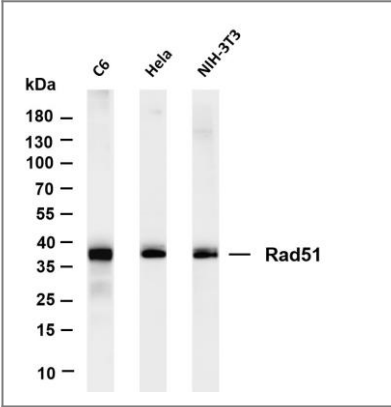
Immunogen Information

Specificity	Endogenous
-------------	------------

Target Information

Gene name	RAD51		
Protein Name	DNA repair protein RAD51 homolog 1		
	Organism	Gene ID	UniProt ID
	Human	5888 ;	Q06609 ;
	Mouse	19361 ;	Q08297 ;
Cellular Localization	Cytoplasm, Nucleus		
Tissue specificity	Highly expressed in testis and thymus, followed by small intestine, placenta, colon, pancreas and ovary. Weakly expressed in breast.		
Function	<p>Disease:Defects in RAD51 are associated with breast cancer (BC) [MIM:114480].,Function:May participate in a common DNA damage response pathway associated with the activation of homologous recombination and double-strand break repair. Binds to single and double stranded DNA and exhibits DNA-dependent ATPase activity. Underwinds duplex DNA and forms helical nucleoprotein filaments.,ANTM:Phosphorylated. Phosphorylation of Thr-309 by CHEK1/CHK1 may enhance association with chromatin at sites of DNA damage and promote DNA repair by homologous recombination.,similarity:Belongs to the recA family.,similarity:Belongs to the recA family. RAD51 subfamily.,similarity:Contains 1 HhH domain.,subcellular location:Colocalizes with RAD51AP1 to multiple nuclear foci upon induction of DNA damage.,subunit:Interacts with BRCA1, BRCA2 and either directly or indirectly with p53. Interacts with XRCC3, RAD54L and RAD54B. Part of a complex with RAD51C and RAD51B. Interacts with RAD51AP1 and RAD51AP2. Interacts with CHEK1/CHK1, and this may require prior phosphorylation of CHEK1. Interacts with the MND1-PSMC3IP heterodimer (By similarity). Interacts with OBFC2B.,tissue specificity:Highly expressed in testis and thymus, followed by small intestine, placenta, colon, pancreas and ovary. Weakly expressed in breast.,</p>		

Validation Data



Various whole cell lysates were separated by 4-20% SDS-PAGE, and the membrane was blotted with anti-Rad51 (ANT0083R) antibody. The HRPconjugated Goat anti-Rabbit IgG(H + L) antibody was used to detect the antibody. Lane 1: C6 Lane 2: HeLa Lane 3: NIH-3T3 Predicted band size: 37kDa Observed band size: 37kDa

