



STAT1 α (ANT0079R) Rabbit mAb

CatalogNo: ANT8042 **Recombinant** 

Formulation: PBS, 50% glycerol, 0.05% Proclin 300, 0.05% BSA

Quantity : 100 ug/vial

Host Species

- Rabbit
- Human, Mouse, Rat,

Reactivity

- WB, IHC, IF, IP, ELISA

Applications

MW

- 87kD (Calculated)
- 90kD (Observed)

Isotype

- IgG, Kappa

Recommended Dilution Ratios

HC 1:500-1000

WB 1:1000-5000

IF 1:200-1000

ELISA 1:5000-20000

IP 1:50-200

Storage

Storage* -15°C to -25°C/1 year (Do not lower than -25°C)

Basic Information

Clonality Monoclonal

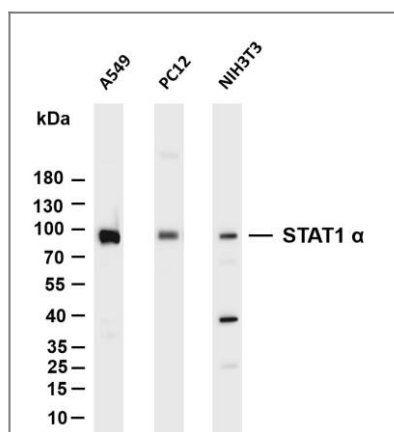
Clone Number ANT0079R

Target Information

Endogenous

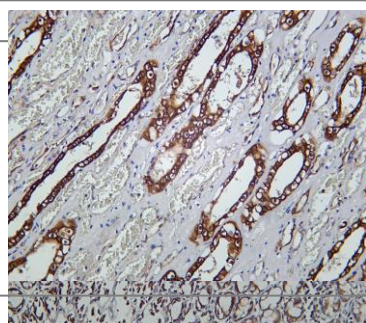
Gene name	STAT1		
Protein Name	Signal transducer and activator of transcription 1-alpha/beta (Transcription factor ISGF-3 components p91/p84)		
	Organism	Gene ID	UniProt ID
	Human	6772 ;	P42224 ;
	Mouse		P42225 ;
Cellular Localization	Nuclear		
Function	Signal transducer and transcription activator that mediates cellular responses to interferons (IFNs), cytokine KITLG/SCF and other cytokines and other growth factors. Following type I IFN (IFN-alpha and IFN-beta) binding to cell surface receptors, signaling via protein kinases leads to activation of Jak kinases (TYK2 and JAK1) and to tyrosine phosphorylation of STAT1 and STAT2. The phosphorylated STATs dimerize and associate with ISGF3G/IRF-9 to form a complex termed ISGF3 transcription factor, that enters the nucleus . ISGF3 binds to the IFN stimulated response element (ISRE) to activate the transcription of IFN-stimulated genes (ISG), which drive the cell in an antiviral state. In response to type II IFN (IFN-gamma), STAT1 is tyrosine- and serine-phosphorylated . It then forms a homodimer termed IFNgamma-activated factor (GAF), migrates into the nucleus and binds to the IFN gamma activated sequence (GAS) to drive the expression of the target genes, inducing a cellular antiviral state. Becomes activated in response to KITLG/SCF and KIT signaling. May mediate cellular responses to activated FGFR1, FGFR2, FGFR3 and FGFR4.		

Validation Data

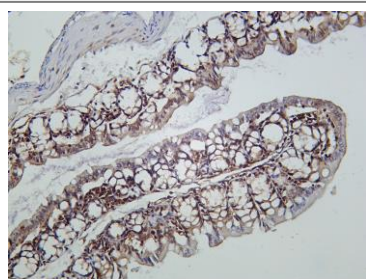


Various whole cell lysates were separated by 4-20% SDS-PAGE, and the membrane was blotted with anti-STAT1 α (ANT0079R) antibody. The HRPconjugated Goat anti-Rabbit IgG(H + L) antibody was used to detect the antibody. Lane 1: A549 Lane 2: PC12 Lane 3: NIH3T3 Predicted band size:

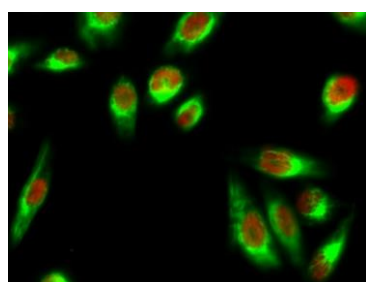
87kDa Observed band size: 90kDa



Rat colon was stained with Anti-STAT1 α (ANT0079R) rabbit antibody
Human kidney was stained with Anti-STAT1 α (ANT0079R) rabbit antibody



Mouse colon was stained with Anti-STAT1 α (ANT0079R) rabbit antibody



Immunofluorescence analysis of HeLa cell. 1, Stat1 Polyclonal Antibody(red) was diluted at 1:200(4° overnight). p53 Monoclonal Antibody(6C4)(green) was diluted at 1:200(4° overnight). 2, Goat Anti Rabbit Alexa Fluor 594 Catalog:RS3611 was diluted at 1:1000(room temperature, 50min). Goat Anti Mouse Alexa Fluor 488 Catalog:RS3208 was diluted at 1:1000(room temperature, 50min).

For Research use only, not for diagnostics and clinical use
Contact Antagene Inc Tel 1-866-964-2589 Email: info@antageneinc.com