



Mouse Monoclonal Antibody **GSK3  $\beta$  (phospho Ser9)** conjugated to Sepharose Beads

CatalogNo: **ANT8041-M**

Size 200ul

Storage Store at 4 °C for frequent use

#### Description

This Antagene antibody is immobilized by the covalent reaction of hydrazinonicotinamide-modified antibody with formylbenzamide-modified beads. It is useful for immunoprecipitation.

**GSK3  $\beta$  (phospho Ser9) (ANT0078R) Rabbit mAb**

Formulation: Each vial contains 1mg/ml Magnetic Bead in PBS, pH 7.2, 0.05mg ANaN3.

#### Host Species

- Rabbit
- Human, Mouse,

#### Reactivity

- WB, IHC, IF, IP, ELISA

#### Applications

#### MW

- 46kD (Calculated)
- IgG, Kappa
- 46kD (Observed)

#### Isotype

## **Recommended Dilution Ratios**

Basic Information

Clonality	Monoclonal
Clone Number	ANT0078R

Immunogen Information Specificity

Endogenous

Gene name	GSK3B
Protein Name	Glycogen synthase kinase-3 beta

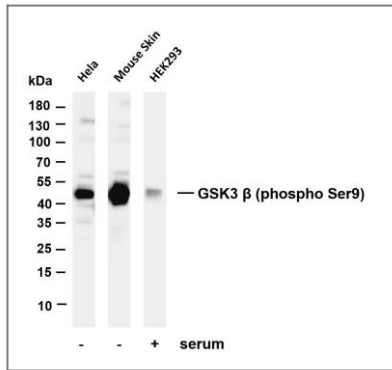
Organism	Gene ID	UniProt ID
Human	<a href="#">2932;</a>	<a href="#">P49841;</a>
Mouse	<a href="#">56637;</a>	<a href="#">Q9WV60;</a>
Rat	<a href="#">84027;</a>	<a href="#">P18266;</a>

Cellular Localization	Cytoplasmic, Membranous
-----------------------	-------------------------

**Tissue specificity** Expressed in testis, thymus, prostate and ovary and weakly expressed in lung, brain and kidney. Colocalizes with EIF2AK2/PKR and TAU in the Alzheimer disease (AD) brain.

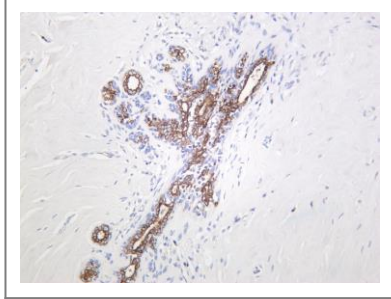
**Function** Catalytic activity:ATP + [tau protein] = ADP + [tau protein] phosphate.,enzyme regulation:Inhibited when phosphorylated by AKT1.,Function:Participates in the Wnt signaling pathway. Implicated in the hormonal control of several regulatory proteins including glycogen synthase, MYB and the transcription factor JUN. Phosphorylates JUN at sites proximal to its DNA-binding domain, thereby reducing its affinity for DNA. Phosphorylates MUC1 in breast cancer cells, and decreases the interaction of MUC1 with CTNNB1/beta-catenin.,ANTM:Phosphorylated by AKT1 and ILK1.,similarity:Belongs to the protein kinase superfamily.,similarity:Belongs to the protein kinase superfamily. CMGC Ser/Thr protein kinase family. GSK-3 subfamily.,similarity:Contains 1 protein kinase domain.,subunit:Monomer (By similarity). Interacts with CABYR, MUC1, NIN and PRUNE.,tissue specificity:Expressed in testis, thymus, prostate and ovary and weakly expressed in lung, brain and kidney.,

## Validation Data



Various whole cell lysates were separated by 4-20% SDS-PAGE, and the membrane was blotted with anti-GSK3  $\beta$  (phospho Ser9) (ANT0078R) antibody. The HRP-conjugated Goat anti-Rabbit IgG(H + L) antibody was used to detect the antibody. Lane 1: HeLa Lane 2: Mouse skin Lane 3: HEK293 treated with serum in 30 minutes Predicted band size: 46kDa Observed band size: 46kDa

Human breast carcinoma was stained with Anti-GSK3  $\beta$  (phospho Ser9) (ANT0078R) rabbit antibody



---

For Research use only, not for diagnostics and clinical use  
Contact Antagene Inc Tel 1-866-964-2589 Email: [info@antageneinc.com](mailto:info@antageneinc.com)