



Mouse Monoclonal Antibody α smooth muscle actin conjugated to Sepharose Beads

CatalogNo: **ANT8040-M**

Size 200ul

Storage Store at 4 °C for frequent use

Description

This Antagene antibody is immobilized by the covalent reaction of hydrazinonicotinamide-modified antibody with formylbenzamide-modified beads. It is useful for immunoprecipitation.

α smooth muscle actin (ANT0074R) Rabbit mAb

Formulation: Each vial contains 1mg/ml Magnetic Bead in PBS, pH 7.2, 0.05mg ANaN3.

Host Species

- Rabbit
- Human, Mouse, Rat,

Reactivity

- WB, IHC, IF, IP, ELISA

Applications

MW

- 42kD (Calculated)
 - IgG, Kappa
- 42kD (Observed)

Isotype

Recommended Dilution Ratios

IP

Basic Information

Clonality

Monoclonal

Clone Number ANT0074R

Immunogen Information Specificity

Endogenous

Gene name ACTA2

Protein Name Actin aortic smooth muscle

Organism	Gene ID	UniProt ID
Human	59;	P62736;
Mouse	11475;	P62737;
Rat	81633;	P62738;

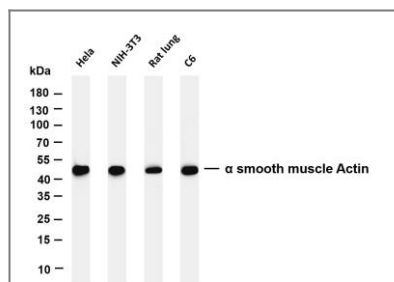
Cellular Cytoplasm

Localization

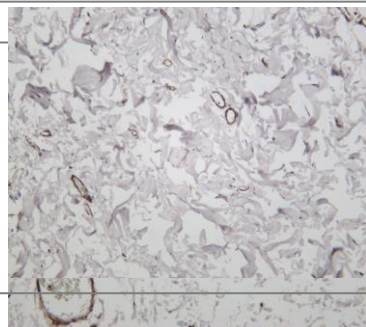
Tissue specificity Pituitary,Uterus,

Function Disease:Defects in ACTA2 are the cause of aortic aneurysm familial thoracic type 6 (AAT6) [MIM:611788]. AATs are characterized by permanent dilation of the thoracic aorta usually due to degenerative changes in the aortic wall. They are primarily associated with a characteristic histologic appearance known as 'medial necrosis' or 'Erdheim cystic medial necrosis' in which there is degeneration and fragmentation of elastic fibers, loss of smooth muscle cells, and an accumulation of basophilic ground substance.,Function:Actins are highly conserved proteins that are involved in various types of cell motility and are ubiquitously expressed in all eukaryotic cells.,miscellaneous:In vertebrates 3 main groups of actin isoforms, alpha, beta and gamma have been identified. The alpha actins are found in muscle tissues and are a major constituent of the contractile apparatus. The beta and gamma actins coexist in most cell types as components of the cytoskeleton and as mediators of internal cell motility.,similarity:Belongs to the actin family.,subunit:Polymerization of globular actin (G-actin) leads to a structural filament (F-actin) in the form of a two-stranded helix. Each actin can bind to 4 others.,

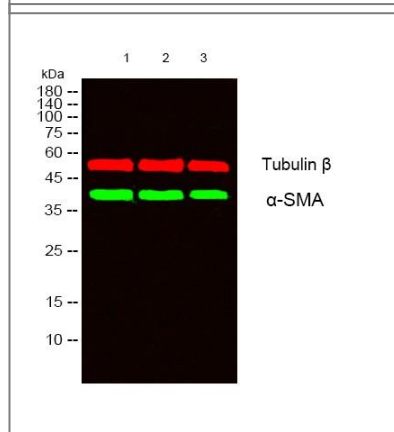
Validation Data



Various whole cell lysates were separated by 4-20% SDS-PAGE, and the membrane was blotted with anti- α smooth muscle Actin (ANT0074R) antibody. The HRP-conjugated Goat anti-Rabbit IgG(H + L) antibody was used to detect the antibody. Lane 1: HeLa Lane 2: NIH-3T3 Lane 3: Rat lung Lane 4: C6
Predicted band size: 42kDa Observed band size: 42kDa



Human colon was stained with anti- α smooth muscle actin (ANT0074R) rabbit antibody
Human stomach was stained with anti- α smooth muscle actin (ANT0074R) rabbit antibody



Western blot analysis of lysates from 1) Jurkat, 2) K562, 3) HuvEC cells, (Green) primary antibody was diluted at 1:1000, 4° over night, secondary antibody(cat:RS23920) was diluted at 1:10000, 37° 1 hour. (Red) Tubulin β Monoclonal Antibody(5G3) (cat:YM3030) antibody was diluted at 1:5000 as loading control, 4° over night, secondary antibody(cat:RS23710) was diluted at 1:10000, 37° 1 hour.

For Research use only, not for diagnostics and clinical use
Contact Antagene Inc Tel 1-866-964-2589 Email: info@antageneinc.com