



Mouse Monoclonal Antibody **Cyclin B1 (phospho Ser126)** conjugated to Sepharose Beads

CatalogNo: **ANT8038-S**

Size 200ul

Storage Store at 4 °C for frequent use

Description

This Antagene antibody is immobilized via covalent binding of primary amino groups to N-hydroxysuccinimide (NHS)-activated sepharose beads. It is useful for immunoprecipitation assays.

Cyclin B1 (phospho Ser126) (ANT0070R) Rabbit mAb

Formulation: 50% slurry in PBS pH 7.2 with 0.01mg NaN₃ preservative.

Host Species

- Rabbit
- Human,
- WB,IHC,IF,IP,ELISA

Reactivity

Applications

MW

- 48kD (Calculated)
- IgG,Kappa
- 55kD (Observed)

Isotype

Recommended Dilution Ratios

IP

Basic Information

Clonality Monoclonal

Clone Number ANT0070R

Immunogen Information

Sequence	G2/mitotic-specific cyclin-B1
Specificity	Endogenous

Target Information

Gene name >>FoxO signaling pathway;>>Cell cycle;>>Oocyte meiosis;>>p53 signaling pathway;>>Cellular senescence;>>Progesterone-mediated oocyte maturation;>>Human immunodeficiency virus 1 infection

Protein Name CCNB1

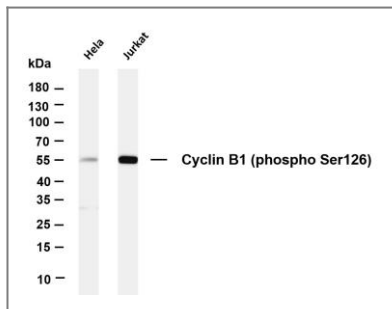
Organism	Gene ID	UniProt ID
Human	891;	P14635;
Mouse	268697;	P24860;
Rat	25203;	P30277;

Cellular Localization Cytoplasm, Nuclear

Tissue specificity Breast adenocarcinoma,Lung,Placenta,

Function developmental stage:Accumulates steadily during G2 and is abruptly destroyed at mitosis.,Function:Essential for the control of the cell cycle at the G2/M (mitosis) transition.,ANTM:Ubiquitinated by the SCF(NIPA) complex during interphase, leading to its destruction. Not ubiquitinated during G2/M phases.,similarity:Belongs to the cyclin family.,similarity:Belongs to the cyclin family. Cyclin AB subfamily.,subunit:Interacts with the CDC2 protein kinase to form a serine/threonine kinase holoenzyme complex also known as maturation promoting factor (MPF). The cyclin subunit imparts substrate specificity to the complex. Binds HEI10. Interacts with catalytically active RALBP1 and CDC2 during mitosis to form an endocytotic complex during interphase.,

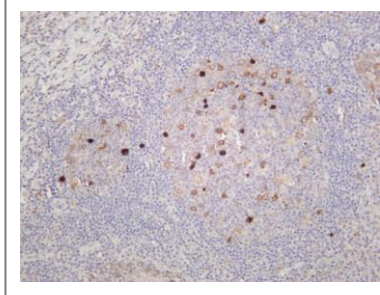
Validation Data



Various whole cell lysates were separated by 4-20% SDS-PAGE, and the membrane was blotted with anti-Cyclin B1 (phospho Ser126) (ANT0070R) antibody. The HRP-conjugated Goat anti-Rabbit IgG(H + L) antibody was used to detect the antibody. Lane 1: HeLa Lane 2: Jurkat Predicted band size:

48kDa Observed band size: 55kDa

Human tonsil was stained with anti-Cyclin B1 (phospho Ser126) (ANT0070R) rabbit antibody



For Research use only, not for diagnostics and clinical use
Contact Antagene Inc Tel 1-866-964-2589 Email: info@antageneinc.com