



Mouse Monoclonal Antibody **Cyclin B1 (phospho Ser126)** conjugated to Sepharose Beads

CatalogNo: **ANT8038-M**

Size 200ul

Storage Store at 4 °C for frequent use

### Description

This Antagene antibody is immobilized by the covalent reaction of hydrazinonicotinamide-modified antibody with formylbenzamide-modified beads. It is useful for immunoprecipitation.

**Cyclin B1 (phospho Ser126) (ANT0070R) Rabbit mAb**

Formulation: Each vial contains 1mg/ml Magnetic Bead in PBS, pH 7.2, 0.05mg ANaN3.

### Host Species

- Rabbit
- Human,
- WB,IHC,IF,IP,ELISA

### Reactivity

### Applications

### MW

- 48kD (Calculated)
- IgG,Kappa
- 55kD (Observed)

### Isotype

## Recommended Dilution Ratios

IP

### Basic Information

**Clonality** Monoclonal

**Clone Number** ANT0070R

# Immunogen Information

Sequence	G2/mitotic-specific cyclin-B1
Specificity	Endogenous

# Target Information

**Gene name** >>FoxO signaling pathway;>>Cell cycle;>>Oocyte meiosis;>>p53 signaling pathway;>>Cellular senescence;>>Progesterone-mediated oocyte maturation;>>Human immunodeficiency virus 1 infection

**Protein Name** CCNB1

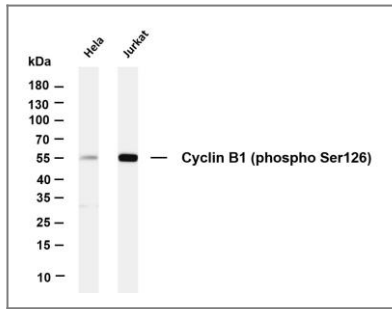
Organism	Gene ID	UniProt ID
Human	<a href="#">891;</a>	<a href="#">P14635;</a>
Mouse	<a href="#">268697;</a>	<a href="#">P24860;</a>
Rat	<a href="#">25203;</a>	<a href="#">P30277;</a>

**Cellular Localization** Cytoplasm, Nuclear

**Tissue specificity** Breast adenocarcinoma,Lung,Placenta,

**Function** developmental stage:Accumulates steadily during G2 and is abruptly destroyed at mitosis.,Function:Essential for the control of the cell cycle at the G2/M (mitosis) transition.,ANTM:Ubiquitinated by the SCF(NIPA) complex during interphase, leading to its destruction. Not ubiquitinated during G2/M phases.,similarity:Belongs to the cyclin family.,similarity:Belongs to the cyclin family. Cyclin AB subfamily.,subunit:Interacts with the CDC2 protein kinase to form a serine/threonine kinase holoenzyme complex also known as maturation promoting factor (MPF). The cyclin subunit imparts substrate specificity to the complex. Binds HEI10. Interacts with catalytically active RALBP1 and CDC2 during mitosis to form an endocytotic complex during interphase.,

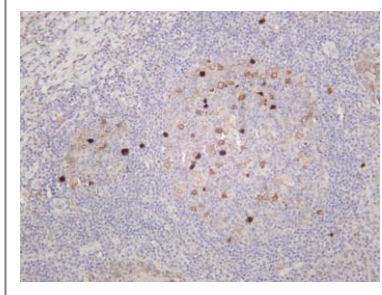
## Validation Data



Various whole cell lysates were separated by 4-20% SDS-PAGE, and the membrane was blotted with anti-Cyclin B1 (phospho Ser126) (ANT0070R) antibody. The HRP-conjugated Goat anti-Rabbit IgG(H + L) antibody was used to detect the antibody. Lane 1: HeLa Lane 2: Jurkat Predicted band size:

48kDa Observed band size: 55kDa

Human tonsil was stained with anti-Cyclin B1 (phospho Ser126) (ANT0070R) rabbit antibody



For Research use only, not for diagnostics and clinical use  
Contact Antagene Inc Tel 1-866-964-2589 Email: [info@antageneinc.com](mailto:info@antageneinc.com)