

CDK6 rabbit (ANT0069R) mAb

CatalogNo: ANT8037 **Recombinant** 

Formulation: PBS,50%glycerol,0.05%Proclin 300,0.05%BSA
Quantity : 100 ug/vial

Host Species

- Rabbit
- Human,
- WB,IHC,IF,IP,ELISA

Reactivity

Applications

MW

- 37kD (Calculated)
 - IgG,Kappa
- 37kD (Observed)

Isotype

Recommended Dilution Ratios

IHC 1:200-1000

WB 1:1000-5000

IF 1:200-1000

ELISA 1:5000-20000

IP 1:50-200

Storage

Storage* -15°C to -25°C/1 year(Do not lower than -25°C)

Basic Information

Clonality Monoclonal

Clone Number ANT0069R

Target Information

Endogenous

Gene name CDK6 CDKN6
Protein Name Cyclin-dependent kinase 6 (Cell division protein kinase 6) (Serine/threonine-protein kinase PLSTIRE)

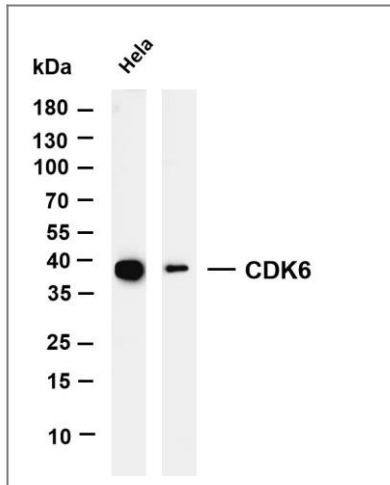
| Organism | Gene ID | UniProt ID |
|----------|-------------------------|--------------------------|
| Human | 1021 ; | Q00534 ; |
| Mouse | 12571 ; | Q64261 ; |

Cellular Localization Nuclear

Tissue specificity Expressed ubiquitously. Accumulates in squamous cell carcinomas, proliferating hematopoietic progenitor cells, beta-cells of pancreatic islets of Langerhans, and neuroblastomas. Reduced levels in differentiating cells.

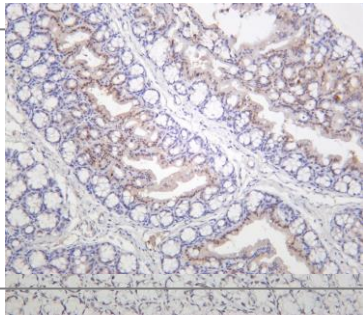
Function Catalytic activity:ATP + a protein = ADP + a phosphoprotein.,Function:Probably involved in the control of the cell cycle. Interacts with D-type G1 cyclins.,polymorphism:Genetic variations in CDK6 influences stature as a quantitative trait type 11 (STQTL11) [MIM:612223]. Adult height is an easily observable and highly heritable complex continuous trait. Because of this, it is a model trait for studying genetic influence on quantitative traits.,similarity:Belongs to the protein kinase superfamily.,similarity:Belongs to the protein kinase superfamily. CMGC Ser/Thr protein kinase family. CDC2/CDKX subfamily.,similarity:Contains 1 protein kinase domain.,

Validation Data

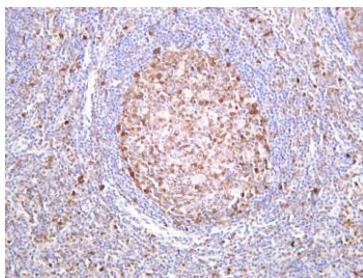


Various whole cell lysates were separated by 4-20% SDS-PAGE, and the membrane was blotted with anti-CDK6 (ANT0069R) antibody. The HRPconjugated Goat anti-Rabbit IgG(H + L) antibody was used to detect the antibody. Lane 1: HeLa Lane 2: Jurkat Lane 3: K562
Predicted band size:

37kDa Observed band size: 37kDa



Rat colon tonsil was stained with Anti-CDK6 (ANT0069R) rabbit antibody
Mouse colon was stained with Anti-CDK6 (ANT0069R) rabbit antibody



Human tonsil was stained with Anti-CDK6 (ANT0069R) rabbit antibody

For Research use only, not for diagnostics and clinical use
Contact Antagene Inc Tel 1-866-964-2589 Email: info@antageneinc.com