



Mouse Monoclonal Antibody **CDK6 rabbit** conjugated to Sepharose Beads

CatalogNo: **ANT8037-M**

Size 200ul

Storage Store at 4 °C for frequent use

Description

This Antagene antibody is immobilized by the covalent reaction of hydrazinonicotinamide-modified antibody with formylbenzamide-modified beads. It is useful for immunoprecipitation.

CDK6 rabbit (ANT0069R) mAb

Formulation: Each vial contains 1mg/ml Magnetic Bead in PBS, pH 7.2, 0.05mg ANaN3.

Host Species

- Rabbit
- Human,
- WB,IHC,IF,IP,ELISA

Reactivity

Applications

MW

- 37kD (Calculated)
- IgG,Kappa
- 37kD (Observed)

Isotype

Recommended Dilution Ratios

IP

Basic Information

Clonality

Monoclonal

Clone Number ANT0069R

Immunogen Information Specificity

Endogenous

Gene name CDK6 CDKN6

Protein Name Cyclin-dependent kinase 6 (Cell division protein kinase 6) (Serine/threonine-protein kinase PLSTIRE)

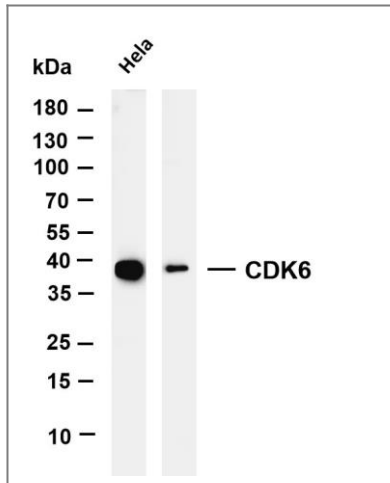
Organism	Gene ID	UniProt ID
Human	1021 ;	Q00534 ;
Mouse	12571 ;	Q64261 ;

Cellular Localization Nuclear

Tissue specificity Expressed ubiquitously. Accumulates in squamous cell carcinomas, proliferating hematopoietic progenitor cells, beta-cells of pancreatic islets of Langerhans, and neuroblastomas. Reduced levels in differentiating cells.

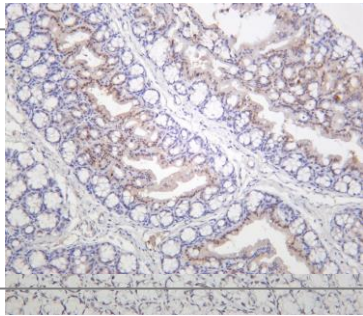
Function Catalytic activity:ATP + a protein = ADP + a phosphoprotein.,Function:Probably involved in the control of the cell cycle. Interacts with D-type G1 cyclins.,polymorphism:Genetic variations in CDK6 influences stature as a quantitative trait type 11 (STQTL11) [MIM:612223]. Adult height is an easily observable and highly heritable complex continuous trait. Because of this, it is a model trait for studying genetic influence on quantitative traits.,similarity:Belongs to the protein kinase superfamily.,similarity:Belongs to the protein kinase superfamily. CMGC Ser/Thr protein kinase family. CDC2/CDKX subfamily.,similarity:Contains 1 protein kinase domain.,

Validation Data

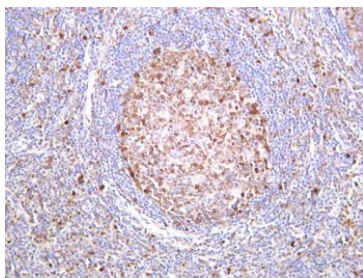


Various whole cell lysates were separated by 4-20% SDS-PAGE, and the membrane was blotted with anti-CDK6 (ANT0069R) antibody. The HRPconjugated Goat anti-Rabbit IgG(H + L) antibody was used to detect the antibody. Lane 1: HeLa Lane 2: Jurkat Lane 3: K562
Predicted band size:

37kDa Observed band size: 37kDa



Rat colon tonsil was stained with Anti-CDK6 (ANT0069R) rabbit antibody
Mouse colon was stained with Anti-CDK6 (ANT0069R) rabbit antibody



Human tonsil was stained with Anti-CDK6 (ANT0069R) rabbit antibody

For Research use only, not for diagnostics and clinical use
Contact Antagene Inc Tel 1-866-964-2589 Email: info@antageneinc.com