



MTCO2 (ANT0068R) Rabbit mAb

CatalogNo: ANT8036 **Recombinant R**

Formulation: PBS,50%glycerol,0.05%Proclin 300,0.05%BSA
Quantity : 100 ug/vial

Host Species

- Rabbit
- Human,
- WB,IHC,IF,IP,ELISA

Reactivity

Applications

MW

- 26kD (Calculated)
 - IgG,Kappa
- 21kD (Observed)

Isotype

Recommended Dilution Ratios

IHC 1:200-1000

WB 1:1000-5000

IF 1:200-1000

ELISA 1:5000-20000

IP 1:50-200

Storage

Storage* -15°C to -25°C/1 year(Do not lower than -25°C)

Basic Information

Clonality Monoclonal

Target Information

Clone Number ANT0068R

Immunogen Information Specificity

Endogenous

Gene name MT-CO2 COII COXII MTCO2

Protein Name Cytochrome c oxidase subunit 2 (Cytochrome c oxidase polypeptide II)

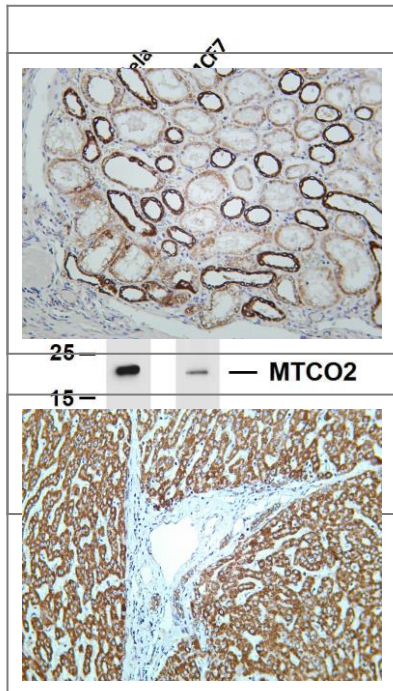
Organism	Gene ID	UniProt ID
Human	4513 ;	P00403 ;
Mouse		P00405 ;
Rat		P00406 ;

Cellular Localization Cytoplasmic

Tissue specificity Blood,Bone fossil,Bones,Breast cancer,Distant normal tissue,Endometrial ade

Function cofactor:Copper A.,Disease:Defects in MT-CO2 are a cause of cytochrome c oxidase deficiency (COX deficiency) [MIM:220110]; also called mitochondrial complex IV deficiency. COX deficiency is a clinically heterogeneous disorder. The clinical features are ranging from isolated myopathy to severe multisystem disease, with onset from infancy to adulthood.,Disease:Defects in MT-CO2 are associated with tumor formation.,Function:Cytochrome c oxidase is the component of the respiratory chain that catalyzes the reduction of oxygen to water. Subunits 1-3 form the functional core of the enzyme complex. Subunit 2 transfers the electrons from cytochrome c via its binuclear copper A center to the bimetallic center of the catalytic subunit 1.,similarity:Belongs to the cytochrome c oxidase subunit 2 family.,

Validation Data



Various whole cell lysates were separated by 4-20% SDS-PAGE, and the membrane was blotted with anti-MTCO2 (ANT0068R) antibody. The HRPconjugated Goat anti-Rabbit IgG(H + L) antibody was used to detect the antibody. Lane 1: Hela Lane 2: MCF7 Predicted band size: 26kDa Observed band size: 21kDa

Human kidney was stained with Anti-MTCO2 (ANT0068R) rabbit antibody

Human liver was stained with Anti-MTCO2 (ANT0068R) rabbit antibody

For Research use only, not for diagnostics and clinical use
Contact Antagene Inc Tel 1-866-964-2589 Email: info@antageneinc.com