



## Mouse Monoclonal Antibody **MTCO2** conjugated to Sepharose Beads

CatalogNo: **ANT8036-S**

Size 200ul

Storage Store at 4 °C for frequent use

### Description

This Antagene antibody is immobilized via covalent binding of primary amino groups to N-hydroxysuccinimide (NHS)-activated sepharose beads. It is useful for immunoprecipitation assays.

### **MTCO2 (ANT0068R) Rabbit mAb**

Formulation: 50% slurry in PBS pH 7.2 with 0.01mg NaN<sub>3</sub> preservative.

#### Host Species

- Rabbit
- Human,
- WB,IHC,IF,IP,ELISA

#### Reactivity

#### Applications

#### MW

- 26kD (Calculated)
- IgG,Kappa
- 21kD (Observed)

#### Isotype

## **Recommended Dilution Ratios**

Basic Information

Clonality	Monoclonal
Clone Number	ANT0068R

Immunogen Information Specificity

Endogenous

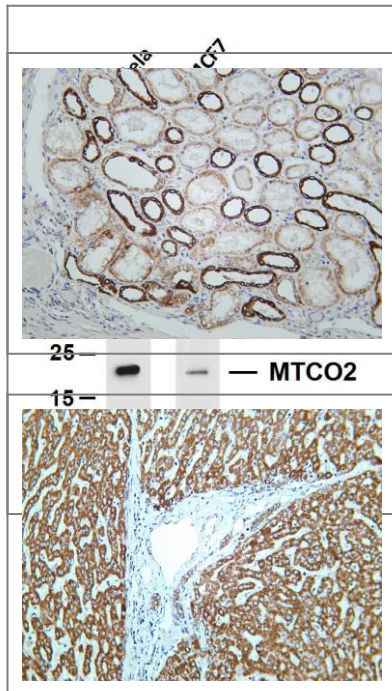
Gene name	MT-CO2 COII COXII MTCO2		
Protein Name	Cytochrome c oxidase subunit 2 (Cytochrome c oxidase polypeptide II)		
	Organism	Gene ID	UniProt ID
	Human	<a href="#">4513</a> ;	<a href="#">P00403</a> ;
	Mouse		<a href="#">P00405</a> ;
	Rat		<a href="#">P00406</a> ;

Cellular Localization  
Cytoplasmic

Tissue specificity Blood,Bone fossil,Bones,Breast cancer,Distant normal tissue,Endometrial ade

Function cofactor:Copper A.,Disease:Defects in MT-CO2 are a cause of cytochrome c oxidase deficiency (COX deficiency) [MIM:220110]; also called mitochondrial complex IV deficiency. COX deficiency is a clinically heterogeneous disorder. The clinical features are ranging from isolated myopathy to severe multisystem disease, with onset from infancy to adulthood.,Disease:Defects in MT-CO2 are associated with tumor formation.,Function:Cytochrome c oxidase is the component of the respiratory chain that catalyzes the reduction of oxygen to water. Subunits 1-3 form the functional core of the enzyme complex. Subunit 2 transfers the electrons from cytochrome c via its binuclear copper A center to the bimetallic center of the catalytic subunit 1.,similarity:Belongs to the cytochrome c oxidase subunit 2 family.,

## Validation Data



Various whole cell lysates were separated by 4-20% SDS-PAGE, and the membrane was blotted with anti-MTCO2 (ANT0068R) antibody. The HRPconjugated Goat anti-Rabbit IgG(H + L) antibody was used to detect the antibody. Lane 1: Hela Lane 2: MCF7 Predicted band size: 26kDa Observed band size: 21kDa

Human kidney was stained with Anti-MTCO2 (ANT0068R) rabbit antibody

Human liver was stained with Anti-MTCO2 (ANT0068R) rabbit antibody

For Research use only, not for diagnostics and clinical use  
Contact Antagene Inc Tel 1-866-964-2589 Email: [info@antageneinc.com](mailto:info@antageneinc.com)