



Mouse Monoclonal Antibody **Clathrin Heavy Chain 1** conjugated to Sepharose Beads

CatalogNo: **ANT8035-M**

Size 200ul

Storage Store at 4 °C for frequent use

Description

This Antagene antibody is immobilized by the covalent reaction of hydrazinonicotinamide-modified antibody with formylbenzamide-modified beads. It is useful for immunoprecipitation.

Clathrin Heavy Chain 1 (ANT0067R) Rabbit mAb

Formulation: Each vial contains 1mg/ml Magnetic Bead in PBS, pH 7.2, 0.05mg ANaN3.

Host Species

- Rabbit

MW

- 192kD (Calculated)
- 180kD (Observed)

Reactivity

- Human, Mouse, Rat,

Isotype

- IgG, Kappa

Applications

- WB, IHC, IF, ELISA

Recommended Dilution Ratios

IP

Basic Information

Clonality Monoclonal

Clone Number ANT0067R

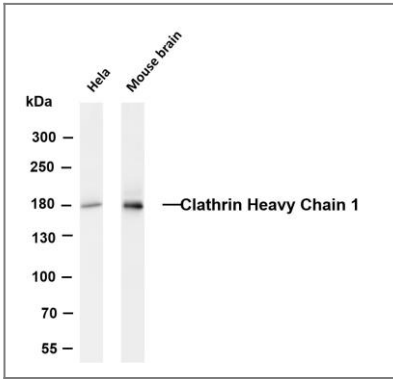
Immunogen Information

Specificity Endogenous

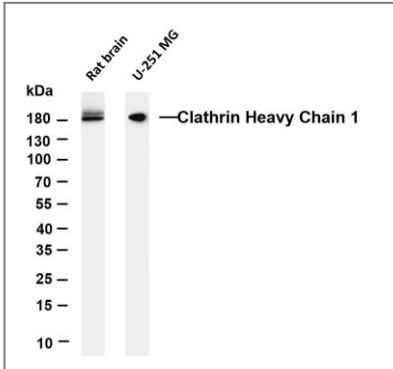
Target Information

Gene name	CLTC CLH17 CLTCL2 KIAA0034		
Protein Name	Clathrin heavy chain 1 (Clathrin heavy chain on chromosome 17) (CLH-17)		
	Organism	Gene ID	UniProt ID
	Human	1213;	Q00610;
Cellular Localization	Cytoplasm		
Tissue specificity	Bone marrow,Brain,Cervix carcinoma,Colon,Epithelium,Fetal kidney,Hepatoma,Mammary c		
Function	Function:Clathrin is the major protein of the polyhedral coat of coated pits and vesicles. Two different adapter protein complexes link the clathrin lattice either to the plasma membrane or to the trans-Golgi network.,online information:Clathrin entry,similarity:Belongs to the clathrin heavy chain family.,subcellular location:Cytoplasmic face of coated pits and vesicles. Identified by mass spectrometry in melanosome fractions from stage I to stage IV.,subunit:Clathrin triskelions, composed of 3 heavy chains and 3 light chains, are the basic subunits of the clathrin coat. In the presence of light chains, hub assembly is influenced by both the pH and the concentration of calcium. Interacts with HIP1.,		

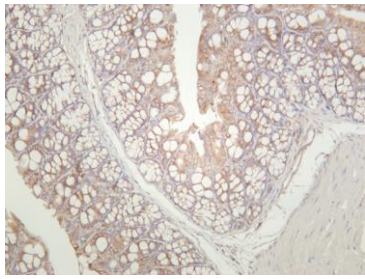
Validation Data



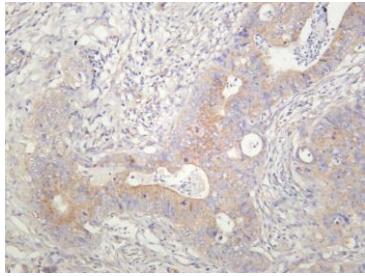
Various whole cell lysates were separated by 4-8% SDS-PAGE, and the membrane was blotted with anti-Clathrin Heavy Chain 1 (ANT0067R) antibody. The HRP-conjugated Goat anti-Rabbit IgG(H + L) antibody was used to detect the antibody. Lane 1: HeLa Lane 2: Mouse brain Predicted band size: 192kDa
Observed band size: 180kDa



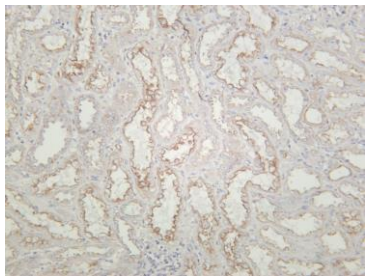
Various whole cell lysates were separated by 4-20% SDS-PAGE, and the membrane was blotted with anti-Clathrin Heavy Chain 1 (ANT0067R) antibody. The HRP-conjugated Goat anti-Rabbit IgG(H + L) antibody was used to detect the antibody. Lane 1:Rat brain Lane 2: U-251 MG Predicted band size: 192kDa
Observed band size: 180kDa



Mouse colon was stained with anti-Clathrin Heavy Chain 1 (ANT0067R) rabbit antibody



Human colon carcinoma was stained with anti-Clathrin Heavy Chain 1 (ANT0067R) rabbit antibody



Human kidney was stained with anti-Clathrin Heavy Chain 1 (ANT0067R) rabbit antibody. Orders: order@immunoway.com. Please scan the QR code. Support: tech@immunoway.com to access additional

For Research use only, not for diagnostics and clinical use
Contact Antagene Inc Tel 1-866-964-2589 Email: info@antageneinc.com