



Mouse Monoclonal Antibody **GCLM** conjugated to Sepharose Beads

CatalogNo: **ANT8034-M**

Size 200ul

Storage Store at 4 °C for frequent use

Description

This Antagene antibody is immobilized by the covalent reaction of hydrazinonicotinamide-modified antibody with formylbenzamide-modified beads. It is useful for immunoprecipitation.

GCLM (ANT0065R) Rabbit mAb

Formulation: Each vial contains 1mg/ml Magnetic Bead in PBS, pH 7.2, 0.05mg ANaN3.

Host Species

- Rabbit
- Human, Mouse, Rat,

Reactivity

- WB, IHC, IF, IP, ELISA

Applications

MW

- 31kD (Calculated)
- IgG, Kappa
- 31kD (Observed)

Isotype

Recommended Dilution Ratios

Basic Information

Clonality	Monoclonal
Clone Number	ANT0065R

Immunogen Information Specificity

Endogenous

Gene name	GCLM
Protein Name	Glutamate--cysteine ligase regulatory subunit

Organism	Gene ID	UniProt ID
Human	2730 ;	P48507 ;
Mouse	14630 ;	O09172 ;
Rat	29739 ;	P48508 ;

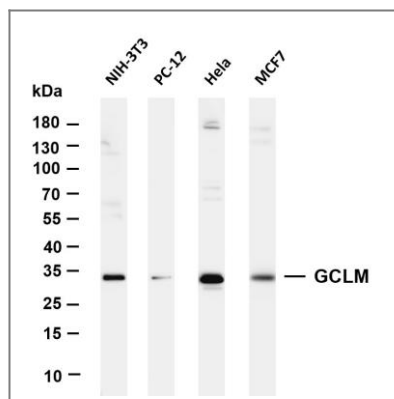
Cellular Localization	Cytoplasm
-----------------------	-----------

Tissue specificity In all tissues examined. Highest levels in skeletal muscle.

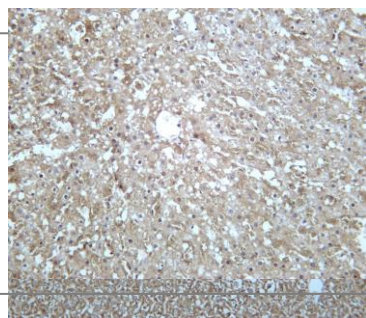
Function pathway:Sulfur metabolism; glutathione biosynthesis; glutathione from L-cysteine and Lglutamate: step 1/2.,similarity:Belongs to the aldo/keto reductase family. Glutamate-cysteine ligase light chain subfamily.,subunit:Heterodimer of a catalytic heavy chain and a regulatory light chain.,tissue specificity:In all tissues examined. Highest levels in skeletal muscle.,



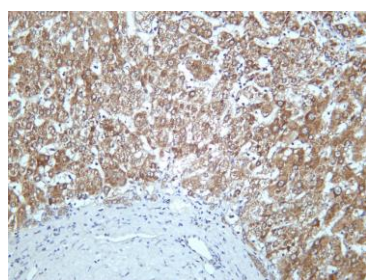
Validation Data



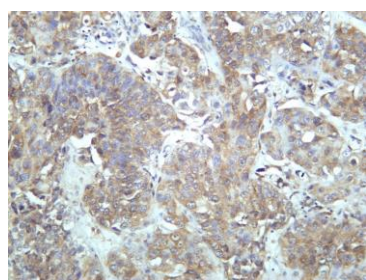
Various whole cell lysates were separated by 4-20% SDS-PAGE, and the membrane was blotted with anti-GCLM (ANT0065R) antibody. The HRPconjugated Goat anti-Rabbit IgG(H + L) antibody was used to detect the antibody. Lane 1: NIH-3T3 Lane 2: PC-12 Lane 3: HeLa Lane 4: MCF7
 Predicted band size: 31kDa Observed band size: 31kDa



Mouse liver was stained with Anti-GCLM (ANT0065R) rabbit antibody
 Rat liver was stained with Anti-GCLM (ANT0065R) rabbit antibody



Human liver was stained with Anti-GCLM (ANT0065R) rabbit antibody



Human bladder carcinoma was stained with Anti-GCLM (ANT0065R) rabbit antibody

For Research use only, not for diagnostics and clinical use
Contact Antagene Inc Tel 1-866-964-2589 Email: info@antageneinc.com