



## CDC37 (phospho Ser13) (ANT0060R) Rabbit mAb

CatalogNo: ANT8031 **Recombinant** 

Formulation: PBS,50%glycerol,0.05%Proclin 300,0.05%BSA  
Quantity : 100 ug/vial

### Host Species

- Rabbit
- Human,Mouse,Rat,

### Reactivity

- WB,IHC,IF,IP,ELISA

### Applications

### MW

- 44kD (Calculated)
- 44kD (Observed)
- IgG,Kappa

### Isotype

## Recommended Dilution Ratios

IHC 1:400-1000

WB 1:1000-5000

IF 1:200-1000

ELISA 1:5000-20000

IP 1:50-200

## Storage

**Storage\*** -15°C to -25°C/1 year(Do not lower than -25°C)

## Basic Information

**Clonality** Monoclonal

**Clone Number** ANT0060R

## Target Information

Endogenous

Gene name CDC37  
Protein Name Hsp90 co-chaperone Cdc37

Organism	Gene ID	UniProt ID
Human	<a href="#">11140;</a>	<a href="#">Q16543;</a>
Mouse	<a href="#">12539;</a>	<a href="#">Q61081;</a>
Rat	<a href="#">114562;</a>	<a href="#">Q63692;</a>

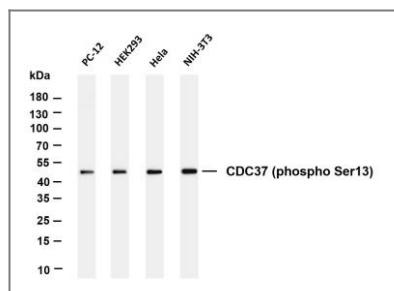
Cellular Localization Cytoplasm

Tissue specificity Lymph,Placenta,

Function:Co-chaperone that binds to numerous kinases and promotes their interaction with the Hsp90 complex, resulting in stabilization and promotion of their activity.,ANTM:Constitutively sumoylated by UBE2I.,similarity:Belongs to the CDC37 family.,subunit:Forms a complex with Hsp90. Interacts with AR, CDK4, CDK6, EIF2AK1 and RB1.,

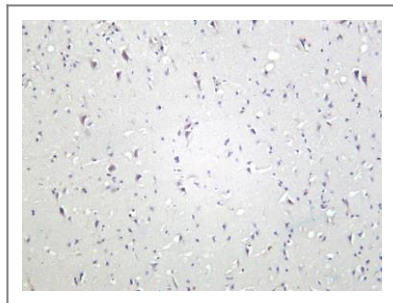


## Validation Data

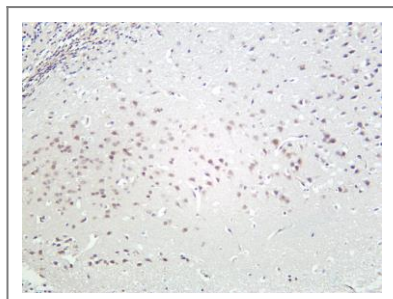


Various whole cell lysates were separated by 4-20% SDS-PAGE, and the membrane was blotted with anti-CDC37 (phospho Ser13) (ANT0060R) antibody. The HRP-conjugated Goat anti-Rabbit IgG(H + L) antibody was used to detect the antibody. Lane 1: PC-12 Lane 2: HEK293 Lane 3: Hela Lane 4: NIH-3T3 Predicted band size: 44kDa Observed band size: 44kDa

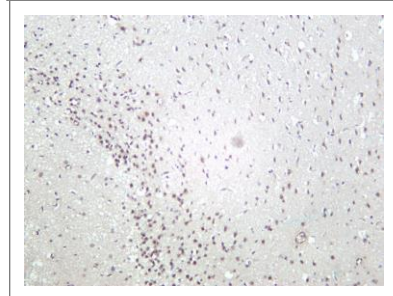
Human brain was stained with Anti-CDC37 (phospho Ser13) (ANT0060R) rabbit antibody



Mouse brain was stained with Anti-CDC37 (phospho Ser13) (ANT0060R) rabbit antibody



Rat brain was stained with Anti-CDC37 (phospho Ser13) (PT0060R) rabbit antibody



For Research use only, not for diagnostics and clinical use  
Contact Antagene Inc Tel 1-866-964-2589 Email: [info@antageneinc.com](mailto:info@antageneinc.com)