



Mouse Monoclonal Antibody **CDC37 (phospho Ser13)** conjugated to Sepharose Beads

CatalogNo: **ANT8031-S**

Size 200ul

Storage Store at 4 °C for frequent use

### Description

This Antagene antibody is immobilized via covalent binding of primary amino groups to N-hydroxysuccinimide (NHS)-activated sepharose beads. It is useful for immunoprecipitation assays.

**CDC37 (phospho Ser13) (ANT0060R) Rabbit mAb**

Formulation: 50% slurry in PBS pH 7.2 with 0.01mg NaN3a3 preservative.

### Host Species

- Rabbit
- Human, Mouse, Rat,

### Reactivity

- WB, IHC, IF, IP, ELISA

### Applications

### MW

- 44kD (Calculated)
  - IgG, Kappa
- 44kD (Observed)

### Isotype

## Recommended Dilution Ratios

### IP

## Basic Information

### Clonality

Monoclonal

Clone Number      ANT0060R

**Immunogen Information** Specificity

Endogenous

**Gene name**            CDC37  
**Protein Name**        Hsp90 co-chaperone Cdc37

Organism	Gene ID	UniProt ID
Human	<a href="#">11140</a> ;	<a href="#">Q16543</a> ;
Mouse	<a href="#">12539</a> ;	<a href="#">Q61081</a> ;
Rat	<a href="#">114562</a> ;	<a href="#">Q63692</a> ;

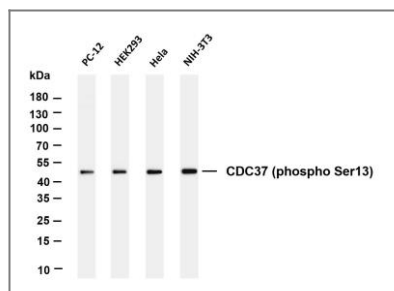
**Cellular Localization**      Cytoplasm

**Tissue specificity** Lymph,Placenta,

**Function**                    Function:Co-chaperone that binds to numerous kinases and promotes their interaction with the Hsp90 complex, resulting in stabilization and promotion of their activity.,ANTM:Constitutively sumoylated by UBE2I.,similarity:Belongs to the CDC37 family.,subunit:Forms a complex with Hsp90. Interacts with AR, CDK4, CDK6, EIF2AK1 and RB1.,

---

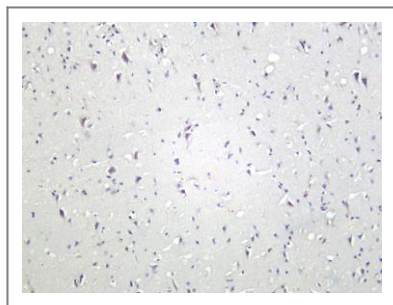
## Validation Data



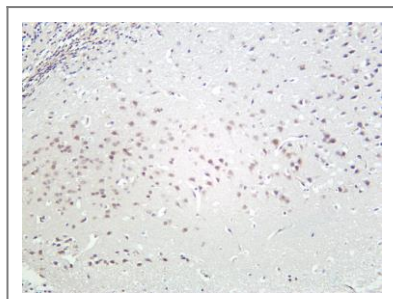
Various whole cell lysates were separated by 4-20% SDS-PAGE, and the membrane was blotted with anti-CDC37 (phospho Ser13) (ANT0060R) antibody. The HRP-conjugated Goat anti-Rabbit IgG(H + L) antibody was used to detect the antibody. Lane 1: PC-12 Lane 2: HEK293 Lane 3: Hela Lane 4:

NIH-3T3 Predicted band size: 44kDa Observed band size: 44kDa

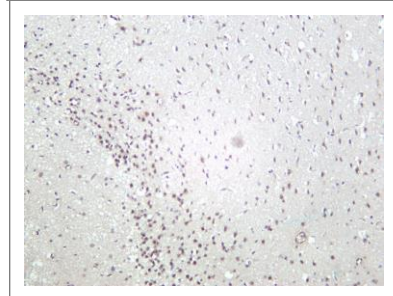
Human brain was stained with Anti-CDC37 (phospho Ser13) (ANT0060R) rabbit antibody



Mouse brain was stained with Anti-CDC37 (phospho Ser13) (ANT0060R) rabbit antibody



Rat brain was stained with Anti-CDC37 (phospho Ser13) (PT0060R) rabbit antibody



For Research use only, not for diagnostics and clinical use  
Contact Antagene Inc Tel 1-866-964-2589 Email: [info@antageneinc.com](mailto:info@antageneinc.com)