



Mouse Monoclonal Antibody **CDC37 (phospho Ser13)** conjugated to Sepharose Beads

CatalogNo: **ANT8031-M**

Size 200ul

Storage Store at 4 °C for frequent use

Description

This Antagene antibody is immobilized by the covalent reaction of hydrazinonicotinamide-modified antibody with formylbenzamide-modified beads. It is useful for immunoprecipitation.

CDC37 (phospho Ser13) (ANT0060R) Rabbit mAb

Formulation: Each vial contains 1mg/ml Magnetic Bead in PBS, pH 7.2, 0.05mg ANaN3.

Host Species

- Rabbit
- Human, Mouse, Rat,

Reactivity

- WB, IHC, IF, IP, ELISA

Applications

MW

- 44kD (Calculated)
- 44kD (Observed)
- IgG, Kappa

Isotype

Recommended Dilution Ratios

IP

Basic Information

Clonality

Monoclonal

Clone Number ANT0060R

Immunogen Information Specificity

Endogenous

Gene name CDC37
Protein Name Hsp90 co-chaperone Cdc37

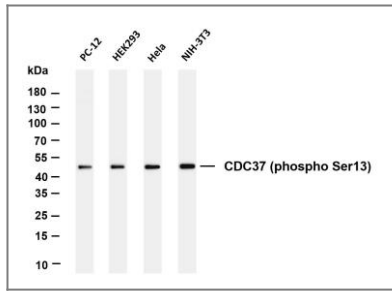
Organism	Gene ID	UniProt ID
Human	11140 ;	Q16543 ;
Mouse	12539 ;	Q61081 ;
Rat	114562 ;	Q63692 ;

Cellular Cytoplasm
Localization

Tissue specificity Lymph,Placenta,

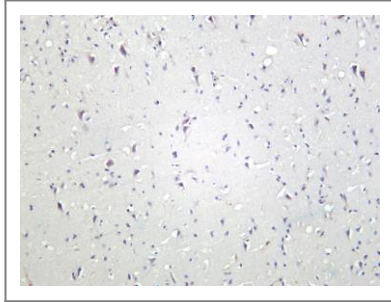
Function Function:Co-chaperone that binds to numerous kinases and promotes their interaction with the Hsp90 complex, resulting in stabilization and promotion of their activity.,ANTM:Constitutively sumoylated by UBE2I.,similarity:Belongs to the CDC37 family.,subunit:Forms a complex with Hsp90. Interacts with AR, CDK4, CDK6, EIF2AK1 and RB1.,

Validation Data

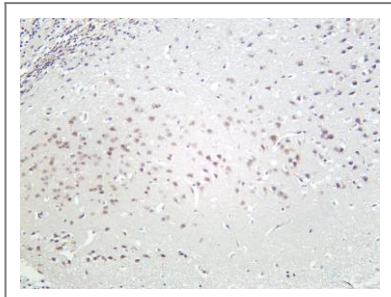


Various whole cell lysates were separated by 4-20% SDS-PAGE, and the membrane was blotted with anti-CDC37 (phospho Ser13) (ANT0060R) antibody. The HRP-conjugated Goat anti-Rabbit IgG(H + L) antibody was used to detect the antibody. Lane 1: PC-12 Lane 2: HEK293 Lane 3: Hela Lane 4: NIH-3T3 Predicted band size: 44kDa Observed band size: 44kDa

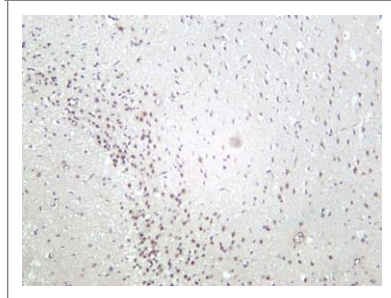
Human brain was stained with Anti-CDC37 (phospho Ser13) (ANT0060R) rabbit antibody



Mouse brain was stained with Anti-CDC37 (phospho Ser13) (ANT0060R) rabbit antibody



Rat brain was stained with Anti-CDC37 (phospho Ser13) (PT0060R) rabbit antibody



For Research use only, not for diagnostics and clinical use
Contact Antagene Inc Tel 1-866-964-2589 Email: info@antageneinc.com