



Glutamine Synthetase (ANT0057R) Rabbit mAb

CatalogNo: ANT8029 **Recombinant R**

Formulation: PBS,50%glycerol,0.05%Proclin 300,0.05%BSA
Quantity : 100 ug/vial

Host Species

- Rabbit
- Human,Mouse,Rat,

Reactivity

- WB,IHC,IF,IP,ELISA

Applications

MW

- 42kD (Calculated)
 - IgG,Kappa
- 42kD (Observed)

Isotype

Recommended Dilution Ratios

IHC 1:1000-1:4000

WB 1:1000-1:5000

IF 1:200-1:1000

ELISA 1:5000-1:20000

IP 1:50-1:200,

Storage

Storage* -15°C to -25°C/1 year(Do not lower than -25°C)

Basic Information

Clonality Monoclonal

Clone Number ANT0057R

Immunogen Information

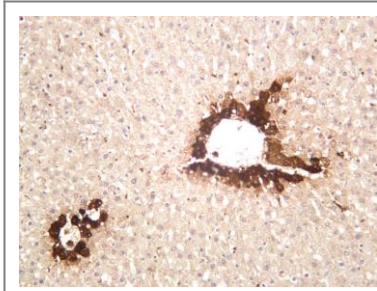
Sequence Glutamine synthetase

Target Information

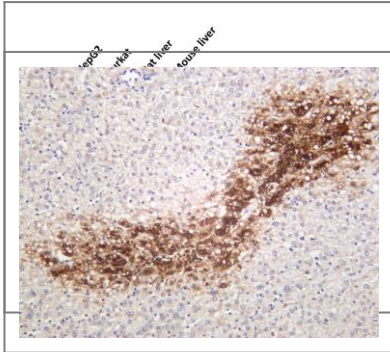
Gene name	>>Arginine biosynthesis;>>Alanine, aspartate and glutamate metabolism;>>Glyoxylate and dicarboxylate metabolism;>>Nitrogen metabolism;>>Metabolic pathways;>>Biosynthesis of amino acids;>>Necroptosis;>>Glutamatergic synapse;>>GABAergic synapse		
Protein Name	GLUL		
	Organism	Gene ID	UniProt ID
	Human	2752;	P15104;
	Mouse	14645;	P15105;
	Rat	24957;	P09606;
Cellular Localization	Cytoplasm, Membrane		
Tissue specificity	Expressed in endothelial cells.		
Function	Catalytic activity:ATP + L-glutamate + NH(3) = ADP + phosphate + Lglutamine.,Disease:Defects in GLUL are the cause of congenital systemic glutamine deficiency (CSGD) [MIM:610015]. CSGD is a rare developmental disorder with severe brain malformation resulting in multi-organ failure and neonatal death. Glutamine is largely absent from affected patients serum, urine and cerebrospinal fluid.,online information:Glutamine synthetase entry,similarity:Belongs to the glutamine synthetase family.,subunit:Homooctamer.,		

Validation Data

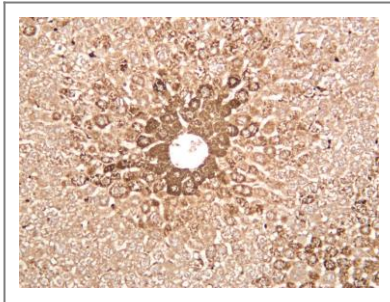
Rat liver was stained with anti-Glutamine Synthetase (ANT0057R) rabbit antibody



Various whole cell lysates were separated by 4-20% SDS-PAGE, and the membrane was blotted with anti-Glutamine Synthetase (ANT0057R) antibody. The HRP-conjugated Goat anti-Rabbit IgG(H + L) antibody was used to detect the antibody. Lane 1: HepG2 Lane 2: Jurkat Lane 3: Rat liver Lane 4: Mouse liver Predicted band size: 42kDa Observed band size: 42kDa



Human hepatocellular carcinoma was stained with anti-Glutamine Synthetase (ANT0057R) rabbit antibody



Mouse liver was stained with anti-Glutamine Synthetase (ANT0057R) rabbit Antibody

For Research use only, not for diagnostics
and clinical use

Contact Antagene Inc Tel 1-866-964-2589

Email: info@antageneinc.com

