



Mouse Monoclonal Antibody **Glutamine Synthetase** conjugated to Sepharose Beads

CatalogNo: **ANT8029-S**

Size 200ul

Storage Store at 4 °C for frequent use

#### Description

This Antagene antibody is immobilized via covalent binding of primary amino groups to N-hydroxysuccinimide (NHS)-activated sepharose beads. It is useful for immunoprecipitation assays.

#### Glutamine Synthetase (ANT0057R) Rabbit mAb

Formulation: 50% slurry in PBS pH 7.2 with 0.01mg NaN<sub>3</sub> preservative.

#### Host Species

- Rabbit
- Human, Mouse, Rat,

#### Reactivity

- WB, IHC, IF, IP, ELISA

#### Applications

#### MW

- 42kD (Calculated)
- 42kD (Observed)
- IgG, Kappa

#### Isotype

## Recommended Dilution Ratios

IP

### Basic Information

**Clonality** Monoclonal

**Clone Number** ANT0057R

### Immunogen Information

Sequence	Glutamine synthetase
Specificity	Endogenous

---

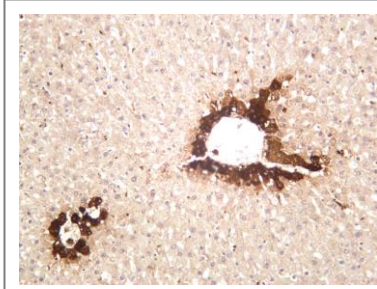
## Target Information

Gene name	>>Arginine biosynthesis;>>Alanine, aspartate and glutamate metabolism;>>Glyoxylate and dicarboxylate metabolism;>>Nitrogen metabolism;>>Metabolic pathways;>>Biosynthesis of amino acids;>>Necroptosis;>>Glutamatergic synapse;>>GABAergic synapse		
Protein Name	GLUL		
	Organism	Gene ID	UniProt ID
	Human	<a href="#">2752;</a>	<a href="#">P15104;</a>
	Mouse	<a href="#">14645;</a>	<a href="#">P15105;</a>
	Rat	<a href="#">24957;</a>	<a href="#">P09606;</a>
Cellular Localization	Cytoplasm, Membrane		
Tissue specificity	Expressed in endothelial cells.		
Function	Catalytic activity:ATP + L-glutamate + NH(3) = ADP + phosphate + Lglutamine.,Disease:Defects in GLUL are the cause of congenital systemic glutamine deficiency (CSGD) [MIM:610015]. CSGD is a rare developmental disorder with severe brain malformation resulting in multi-organ failure and neonatal death. Glutamine is largely absent from affected patients serum, urine and cerebrospinal fluid.,online information:Glutamine synthetase entry,similarity:Belongs to the glutamine synthetase family.,subunit:Homooctamer.,		

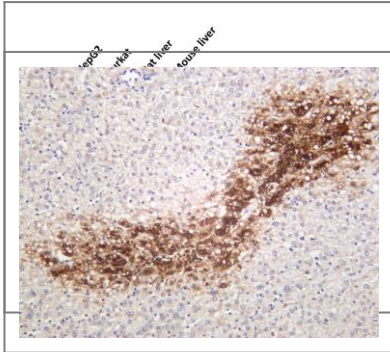
---

## Validation Data

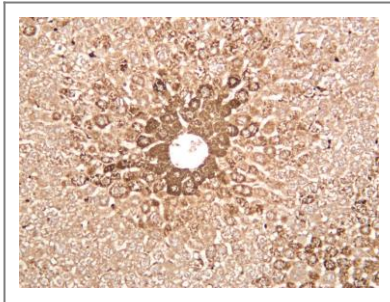
Rat liver was stained with anti-Glutamine Synthetase (ANT0057R) rabbit antibody



Various whole cell lysates were separated by 4-20% SDS-PAGE, and the membrane was blotted with anti-Glutamine Synthetase (ANT0057R) antibody. The HRP-conjugated Goat anti-Rabbit IgG(H + L) antibody was used to detect the antibody. Lane 1: HepG2 Lane 2: Jurkat Lane 3: Rat liver Lane 4: Mouse liver Predicted band size: 42kDa Observed band size: 42kDa



Human hepatocellular carcinoma was stained with anti-Glutamine Synthetase (ANT0057R) rabbit antibody



Mouse liver was stained with anti-Glutamine Synthetase (ANT0057R) rabbit Antibody

For Research use only, not for diagnostics  
and clinical use

Contact Antagene Inc Tel 1-866-964-2589

Email: [info@antageneinc.com](mailto:info@antageneinc.com)

