



Mouse Monoclonal Antibody **Glutamine Synthetase** conjugated to Sepharose Beads

CatalogNo: **ANT8029-M**

Size 200ul

Storage Store at 4 °C for frequent use

Description

This Antagene antibody is immobilized by the covalent reaction of hydrazinonicotinamide-modified antibody with formylbenzamide-modified beads. It is useful for immunoprecipitation.

Glutamine Synthetase (ANT0057R) Rabbit mAb

Formulation: Each vial contains 1mg/ml Magnetic Bead in PBS, pH 7.2, 0.05mg ANaN3.

Host Species

- Rabbit
- Human, Mouse, Rat,

Reactivity

- WB, IHC, IF, IP, ELISA

Applications

MW

- 42kD (Calculated)
- 42kD (Observed)
- IgG, Kappa

Isotype

Recommended Dilution Ratios

IP

Basic Information

Clonality Monoclonal

Clone Number ANT0057R

Immunogen Information

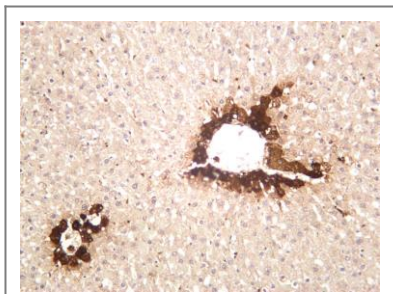
Sequence	Glutamine synthetase
Specificity	Endogenous

Target Information

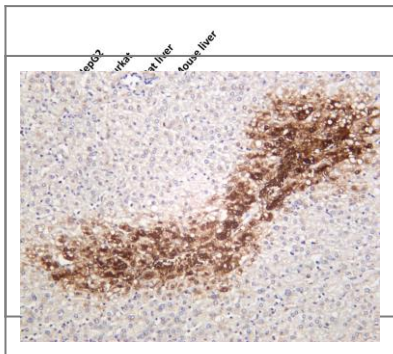
Gene name	>>Arginine biosynthesis;>>Alanine, aspartate and glutamate metabolism;>>Glyoxylate and dicarboxylate metabolism;>>Nitrogen metabolism;>>Metabolic pathways;>>Biosynthesis of amino acids;>>Necroptosis;>>Glutamatergic synapse;>>GABAergic synapse		
Protein Name	GLUL		
	Organism	Gene ID	UniProt ID
	Human	2752;	P15104;
	Mouse	14645;	P15105;
	Rat	24957;	P09606;
Cellular Localization	Cytoplasm, Membrane		
Tissue specificity	Expressed in endothelial cells.		
Function	Catalytic activity:ATP + L-glutamate + NH(3) = ADP + phosphate + Lglutamine.,Disease:Defects in GLUL are the cause of congenital systemic glutamine deficiency (CSGD) [MIM:610015]. CSGD is a rare developmental disorder with severe brain malformation resulting in multi-organ failure and neonatal death. Glutamine is largely absent from affected patients serum, urine and cerebrospinal fluid.,online information:Glutamine synthetase entry,similarity:Belongs to the glutamine synthetase family.,subunit:Homooctamer.,		

Validation Data

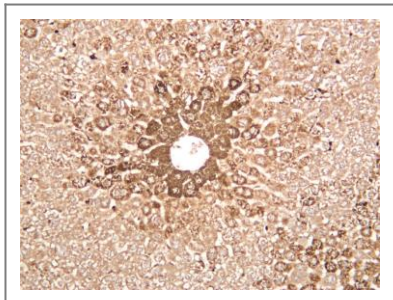
Rat liver was stained with anti-Glutamine Synthetase (ANT0057R) rabbit antibody



Various whole cell lysates were separated by 4-20% SDS-PAGE, and the membrane was blotted with anti-Glutamine Synthetase (ANT0057R) antibody. The HRP-conjugated Goat anti-Rabbit IgG(H + L) antibody was used to detect the antibody. Lane 1: HepG2 Lane 2: Jurkat Lane 3: Rat liver Lane 4: Mouse liver Predicted band size: 42kDa Observed band size: 42kDa



Human hepatocellular carcinoma was stained with anti-Glutamine Synthetase (ANT0057R) rabbit antibody



Mouse liver was stained with anti-Glutamine Synthetase (ANT0057R) rabbit Antibody

For Research use only, not for diagnostics
and clinical use

Contact Antagene Inc Tel 1-866-964-2589

Email: info@antageneinc.com

