

Cleaved PARP1 (ANT0046R) Rabbit mAb

CatalogNo: ANT8021 **Recombinant** 

Formulation: PBS,50%glycerol,0.05%Proclin 300,0.05%BSA
Quantity : 100 ug/vial

Host Species

- Rabbit
- Human,Mouse,Rat,

Reactivity

- WB,IHC,IF,IP,ELISA

Applications

MW

- 25kD (Calculated)
 - IgG,Kappa
- 25kD (Observed)

Isotype

Recommended Dilution Ratios

IHC 1:200-1000

WB 1:500-5000

IF 1:200-1000

ELISA 1:5000-20000

IP 1:50-200

Storage

Storage* -15°C to -25°C/1 year(Do not lower than -25°C)

Basic Information

Clonality Monoclonal

Clone Number ANT0046R

Target Information

Endogenous

Gene name PARP1
Protein Name Poly [ADP-ribose] polymerase 1

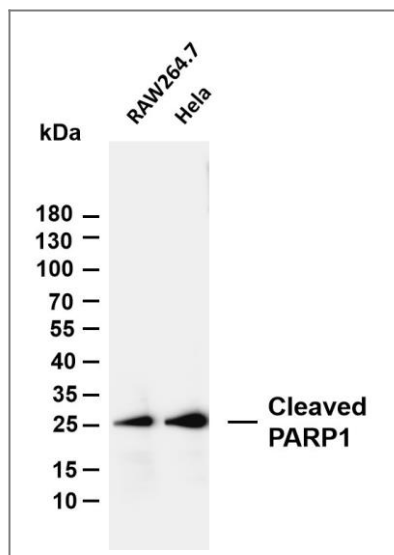
Organism	Gene ID	UniProt ID
Human	142;	P09874;
Mouse		P11103;

Cellular Localization Cytoplasmic, Nuclear

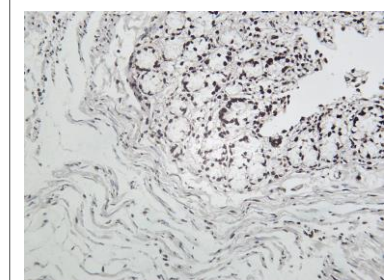
Tissue specificity Brain,Colon carcinoma,Fibroblast,Lung,Ovarian carcinoma,Skin,

Function Catalytic activity:NAD(+) + (ADP-D-ribosyl)(n)-acceptor = nicotinamide + (ADP-Dribosyl)(n+1)-acceptor.,Function:Involved in the base excision repair (BER) pathway, by catalyzing the poly(ADP-ribosyl)ation of a limited number of acceptor proteins involved in chromatin architecture and in DNA metabolism. This modification follows DNA damages and appears as an obligatory step in a detection/signaling pathway leading to the reparation of DNA strand breaks.,miscellaneous:The ADP-D-ribosyl group of NAD(+) is transferred to an acceptor carboxyl group on a histone or the enzyme itself, and further ADP-ribosyl groups are transferred to the 2'-position of the terminal adenosine moiety, building up a polymer with an average chain length of 20-30 units.,ANTM:Phosphorylated by PRKDC. Phosphorylated upon DNA damage, probably by ATM or ATR.,PTM:Poly-ADP-ribosylated by PARP2.,similarity:Contains 1 BRCT domain.,similarity:Contains 1 PARP alpha-helical domain.,similarity:Contains 1 PARP catalytic domain.,similarity:Contains 2 PARP-type zinc fingers.,subunit:Component of a base excision repair (BER) complex, containing at least XRCC1, PARP2, POLB and LIG3. Homo- and heterodimer with PARP2. Interacts with PARP3, APTX and SRY. The SWAP complex consists of NPM1, NCL, PARP1 and SWAP70. Interacts with TIAM2 and ZNF423.,

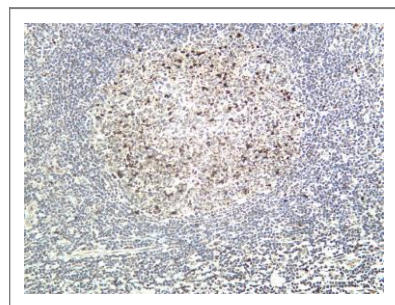
Validation Data



Various whole cell lysates were separated by 4-20% SDS-PAGE, and the membrane was blotted with anti-Cleaved PARP1 (ANT0046R) antibody. The HRP-conjugated Goat anti-Rabbit IgG(H + L) antibody was used to detect the antibody. Lane 1: RAW264.7 Lane 2: HeLa Predicted band size: 25kDa



Rat colon tissue was stained with Anti-Cleaved PARP1 (PT0046R) rabbit Antibody



Human tonsil tissue was stained with Anti-Cleaved PARP1 (PT0046R) rabbit Antibody

For Research use only, not for diagnostics and clinical use
Contact Antagene Inc Tel 1-866-964-2589 Email: info@antageneinc.com
