

Anti-LPL Monoclonal Antibody

Cat. #: P-313

Immunogen/Specificity:

Human LPL whole protein

Recognize specifically LPL from human and bovine.

Applications :

Western blot (1:1000) and ELISA (1:2000~5000) in lipid metabolic research. Lipoprotein lipase (LPL) is the central enzyme in plasma triglyceride hydrolysis and is secreted by macrophages in the subendothelial space. Evidence has been provided that LPL produced by macrophages in the vessel wall exerts proatherogenic effects. The atherogenic effects of LPL have been mainly attributed to its ability to favor lipid accumulation within macrophages present in the atherosclerotic lesion. Recently, it has also been shown that LPL promote the development of atherosclerosis through facilitation of monocyte adhesion to endothelial cells, stimulation of tumor necrosis factor alpha (TNF) secretion and induction of vascular smooth muscle cell proliferation.

Formulation

1mg/ml in PBS, pH 7.4 with 0.05% sodium azide.

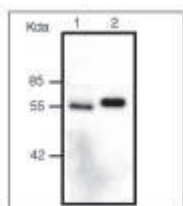
Frozen liquid.

Clone Number: LPL.A4

Isotype: IgG1

Species: Human, Bovine

Storage and Stability: Stable for one year at -20°C from date of shipment. For maximum recovery of product, centrifuge the original vial after thawing and prior to removing the cap. Aliquot to avoid repeated freezing and thawing. Aliquot will be stable at 4°C for 3 months.



Western Blot analysis of human LPL (lane 1) and bovine LPL (lane 2) with mouse anti-human LPL (clone LPL.A4).