

Monoclonal Antibody to Human P16

Cat. #: Mab-6070710

Description

p16 (cyclin-dependent kinase inhibitor 2A, INK4a) is a tumor suppressor protein. It is a specific inhibitor of Cdk 4 / Cdk 6, and a tumor suppressor involved in the pathogenesis of a variety of malignancies. Recent analyses of the p16 INK4a gene revealed homozygous deletions, nonsense, missense, or frameshift mutations in several human cancers. Although the frequency of p16 INK4a abnormalities is higher in tumor derived cell lines than in unselected primary tumors, significant subsets of clinical cases with aberrant p16 INK4a gene have been reported among melanomas, gliomas, esophageal, pancreatic, lung, and urinary bladder carcinomas, and some types of leukemia.

Immunogen

Ni-NTA purified truncated recombinant P16 expressed in E. Coli strain BL21 (DE3)

Applications

Western Blot: 1: 500- 1: 2,000

IHC(P): 1: 200- 1: 1,000

ELISA: Propose dilution 1: 10,000.

Determining optimal working dilutions by titration test.

Formulation

Crude ascites.

References

1. Bai, F. et al. Mol. Cell. Biol.2003 23, 1269-1277.
2. Lowe, S.W. and Sherr, C.J. Curr. Opin. Genet.2003 Dev.13, 77-83.
3. Sherr, C.J. Nat. Rev. Mol. Cell Biol.2001 2, 731-737..

Clone Number: 5A8A4,3G8D12

Isotype:

Species: Human

Storage and Stability: stored at -20 C

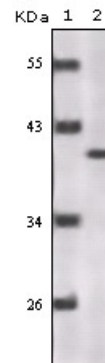


Figure 1: Western blot analysis using P16 monoclonal antibody against truncated P16 recombinant protein.

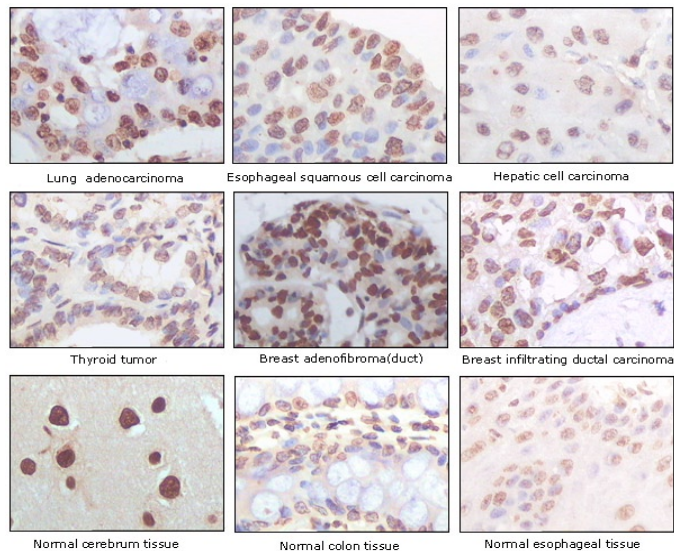


Figure 2: Immunohistochemical analysis of paraffin-embedded human normal, hyperplastic and tumor tissue showing nuclear location using P16 antibody with DAB staining