

# Monoclonal Antibody to INHA(Inhibin alpha

Cat. #: Mab-606126

## Description:

INHA(A-inhibin subunit precursor, inhibin alpha subunit), also called inhibin(alpha), which is located on chromosome 2q33-q36. Inhibin is a gonadal protein that preferentially suppresses the secretion of pituitary follicle-stimulating hormone (FSH). Inhibin comprises of two subunits, Inhibin A and B. Inhibin has been shown to regulate gonadal stromal cell proliferation negatively and to have tumor suppressor activity. In addition, serum levels of inhibin have been shown to reflect the size of granulosa cell tumors and can therefore be used as a marker for primary as well as recurrent disease. In addition to their role in endocrine feedback in the reproductive system, inhibins subserve local regulatory roles in numerous extragonadal tissues, including brain, adrenal, bone marrow, placenta, and most notably anterior pituitary. Inhibin alpha subunit gene expression is down regulated in human prostate cancer, suggesting a tumor suppressive role.

## Immunogen/Specificity:

Ni-NTA purified truncated recombinant INHA expressed in E. Coli strain BL21 (DE3)

## Applications :

Western Blot: 1: 500- 1: 1,000

IHC(P): 1: 1,000- 1: 2,000

ELISA: Propose dilution 1: 10,000

Determining optimal working dilutions by titration test.

## Formulation

Antibodies are purified by protein A affinity chromatography

## Reference:

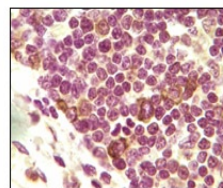
- 1.Mayo, K.E., Cerelli, G.M., Spiess, J., et al. 1986. Proc. Natl. Acad. Sci. USA 83: 5849-5853.
- 2.GM LM, WF Crowley, Jr, AL Schneyer.1995.J. Clin. Endocrinol. Metab., Oct . 80:3043-3049.
- 3.Knight, P.G. 1996.Front. Neuroendocrinol. 17: 476-509.
- 4.PA Fahy, CA Wilson, AJ Beard, et al. 1995.J Endocrinol Nov.147:271-283.

Clone Number: 4A2A9, 4A2F7, 4A2F2

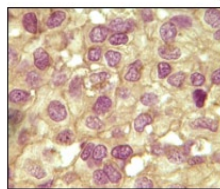
Isotype: IgG1

Species: Human

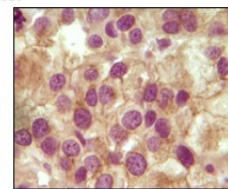
Storage and Stability: stored at -20 C



Human lymphoid tissue



Human ovary tumor tissue



Human testicle tumor tissue

Figure 2: Immunohistochemical analysis of paraffin-embedded human lymphoid tissue, ovary tumor tissue and testicle tumor tissue showing cytoplasmic/membrane localization using Inhibin  $\alpha$  with DAB staining.