

Monoclonal Antibody to GSK3 alpha

Cat. #: Mab-606082

Description:

GSK3 alpha (Glycogen synthase kinase 3 alpha), with 483-amino acid protein (about 53kDa), belongs to the Ser/Thr family of protein kinases, Cdc2/cdkx subfamily, GSK3 subsubfamily, which also includes GSK3 beta. GSK3 is a multifunctional serine/threonine kinase that is usually inactivated by serine phosphorylation in response to extracellular cues. GSK3 is a key regulator of numerous signalling pathways, including cellular responses to Wnt, receptor tyrosine kinases and G-protein-coupled receptors and is involved in a wide range of cellular processes, ranging from glycogen metabolism to cell cycle regulation and proliferation. GSK3 alpha is implicated in the control of several regulatory proteins including glycogen synthase and transcription factors.

Immunogen/Specificity:

Ni-NTA purified truncated recombinant GSK3 alpha expressed in E. Coli strain BL21 (DE3)

Applications :

Western Blot: 1: 500- 1: 2,000

IHC(P): 1: 500- 1: 2,000

IHC(F): 1: 500- 1: 2,000

ELISA: Propose dilution 1: 10,000.

Determining optimal working dilutions by titration test.

Formulation

Crude ascites.

Reference:

1. Bradley W. Doble and James R. Woodgett
J. Cell Sci., Apr 2003; 116: 1175
2. C. Laura Sayas , Aafke Ariaens, Bas Ponsioen
Mol. Biol. Cell, Apr 2006; 17: 1834 - 1844 : 165-185.

Clone Number: 6G2F1,6G2F2

Isotype:

Species: Human

Storage and Stability: stored at -20 C

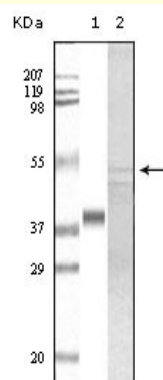
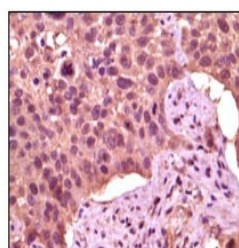
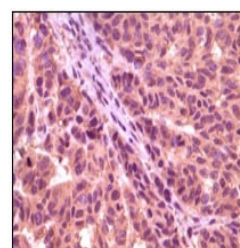


Figure 1: Western blot analysis using anti-Human GSK3 alpha monoclonal antibody against truncated GSK3 alpha recombinant protein(1) and A549 cell lysate(2).



Human lung carcinoma



Human skin carcinoma

Figure 2: Immunohistochemical analysis of paraffin-embedded Human lung carcinoma and skin carcinoma tissue, showing cytoplasmic localization using GSK3 alpha antibody with DAB staining.