

Monoclonal Antibody to Fibulin 5

Cat. #: Mab-606057A

Description:

Fibulin 5 (FBLN5), with 448-amino acid protein (about 50kDa), is a recently discovered multifunctional extracellular matrix protein that mediates endothelial cell adhesion through integrin ligation, regulates cell growth and motility in a context-specific manner, and prevents elastinopathy in vivo. Fibulin-5 is abundantly expressed in great vessels and cardiac valves during embryogenesis, and in many adult tissues including the aorta, lung, uterus and skin, all of which contain abundant elastic fibres. Decreased fibulin-5 may contribute to the pathogenesis of aortic dissection by impairing elastic fiber assembly. Fibulin-5 is also a good marker of skin ageing and that the earlier loss of fibulin-5 may involve age-dependent changes in other elastic fibre components.

Immunogen/Specificity:

Ni-NTA purified truncated recombinant Fibulin 5 expressed in E. Coli strain BL21 (DE3)

Applications :

Western Blot: 1: 500- 1: 2000

IHC(P): 1: 500- 1: 2000

IHC(F): 1: 500- 1: 2000

ELISA: Propose dilution 1: 10,000.

Determining optimal working dilutions by titration test.

Formulation:

Crude ascites.

References:

1. Wen Wang , Scott A. LeMaire, Li Chen
Surgery. 2005 Aug;138(2):352-9
2. K. Kadoya, T. Sasaki, G. Kostka
Br J Dermatol. 2005 Sep;153(3):607-123.
3. Michael J. Lee, Nakshatra K. Roy, Jon E. Mogford
J Am Coll Surg. 2004 Sep;199(3):403-10.

Clone Number: 3F10A5, 3F8A12

Isotype: IgG1

Species: Human

Storage and Stability: at -20oC

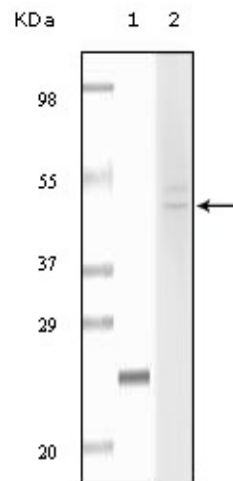
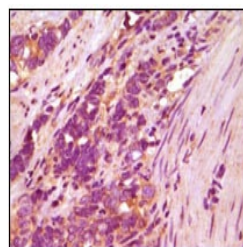
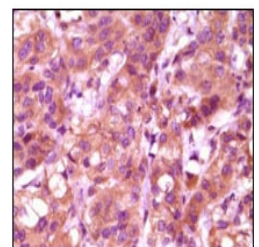


Figure 1: Western blot analysis using anti-Human Fibulin 5 monoclonal antibody against truncated Fibulin 5 recombinant protein(1) and Hela cell lysate(2).



Human stomach carcinoma



Human breast carcinoma

Figure 2: Immunohistochemical analysis of paraffin-embedded Human stomach carcinoma and breast carcinoma tissue, showing cytoplasmic localization using Fibulin 5 antibody with DAB staining.