

Monoclonal Antibody to CD10

Cat. #: Mab-604025

Description:

CD10 is a 100kDa glycoprotein, also designated Common Acute Lymphocytic Leukemia Antigen (CALLA). It is a cell surface enzyme with neutral metalloendopeptidase activity which inactivates a variety of biologically active peptides. CD10 is expressed on the cells of lymphoblastic, Burkitt's, and follicular germinal center lymphomas, and on cells from patients with chronic myelocytic leukemia (CML). It is also expressed on the surface of normal early lymphoid progenitor cells, immature B cells within adult bone marrow and germinal center B cells within lymphoid tissue. CD10 is also present on breast myoepithelial cells, bile canaliculi, fibroblasts, with especially high expression on the brush border of kidney and gut epithelial cells.

Immunogen/Specificity:

Ni-NTA purified recombinant human CD-10 expressed in E. Coli strain BL21 (DE3).

Applications :

IHC(P): Dilution 1: 100- 1: 200

IHC(F): Dilution 1: 200- 1: 400

ELISA: Propose dilution 1: 10000.

Determining optimal working dilutions by titration test.

Formulation

Antibodies are purified by protein G affinity chromatography.

References:

1.Sato Y,et.al.

Journal of Gastroenterology,1996 Feb.31(1):12-7

2.Inukai T,et.al.

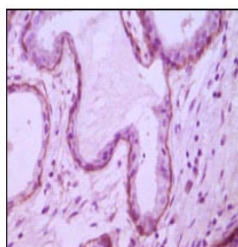
British Journal of Haematology,1995,89(3):623-6

Clone Number: 2A1H5E1

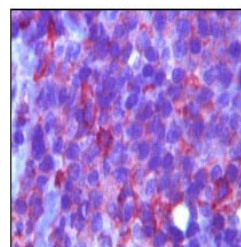
Isotype: IgG2b

Species: Human

Storage and Stability: at -20oC



Human breast ductal myoepithelium



Human lymph tissue

Figure 2: Immunohistochemical analysis of paraffin-embedded human breast ductal myoepithelium and lymph tissue, showing cytoplasmic (**left**) and membrane (**right**) localization using CD-10 antibody with DAB staining (**left**) & AEC (**right**).