



Bcr (Phospho-Tyr177) Antibody

Cat. #: ANTY011199

Species: Human, Mouse

Quantity: 100ug

Concentration: 100ug/100ul

Storage and Stability: Store at -20°C/1 year

Immunogen: The antiserum was produced against synthesized phosphopeptide derived from human Bcr around the phosphorylation site of tyrosine 177 (P-F-Y-VP-N).

Specificity: Bcr (phospho-Tyr177) antibody detects endogenous levels of Bcr only when phosphorylated at tyrosine 177.

Tested Application: WB and IHC

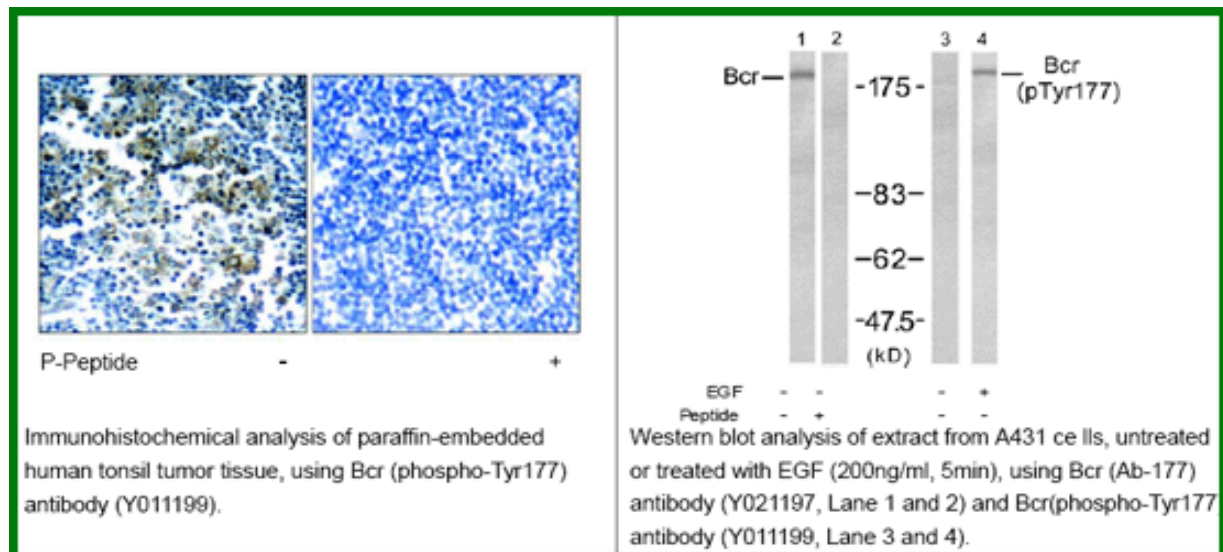
Application Notes: Rabbit IgG in phosphate buffered saline (without Mg²⁺ and Ca²⁺), pH 7.4, 150mM NaCl, 0.02% sodium azide and 50% glycerol.

Raised In: Rabbit

Storage buffer: WB: 1:500~1:1000 IHC: 1:50~1:100

Purity: The antibody was affinity-purified from rabbit antiserum by affinity-chromatography using epitope-specific phosphopeptide. The antibody against non-phosphopeptide was removed by chromatography using non-phosphopeptide corresponding to the phosphorylation site.

Reference: Sattler M, et al. Mol Cell Biol. 1999 Nov; 19(11): 7473-7480. Li S et al. EMBO J. 2001 Dec 3; 20(23): 6793-6804. Million RP, et al. Mol Cell Biol. 2004 Jun; 24(11): 4685-4695. Malcolm A. Meyn, et al. Biol. Chem., Oct 2006; 281: 30907 – 30916.



For research use only

Antagene, Inc. Toll Free: 1-866-964-2589, Fax: 1-888-225-1868, info@antageneinc.com,
www.antageneinc.com