



AFX(Phospho-Ser197)Antibody

Cat. #: ANTY011137

Species: Human, Mouse and Rat

Quantity: 100ug

Concentration: 100ug/100ul

Storage and Stability: Store at -20°C/1 year

Immunogen: The antiserum was produced against synthesized phosphopeptide derived from human AFX around the phosphorylation site of serine 197 (A-A-SP-M-D).

Specificity: AFX (phospho-Ser197) antibody detects endogenous levels of AFX only when phosphorylated at serine 197.

Tested Application: WB, IHC

Application Notes : Rabbit IgG in phosphate buffered saline (without Mg²⁺ and Ca²⁺), pH 7.4, 150mM NaCl, 0.02% sodium azide and 50% glycerol.

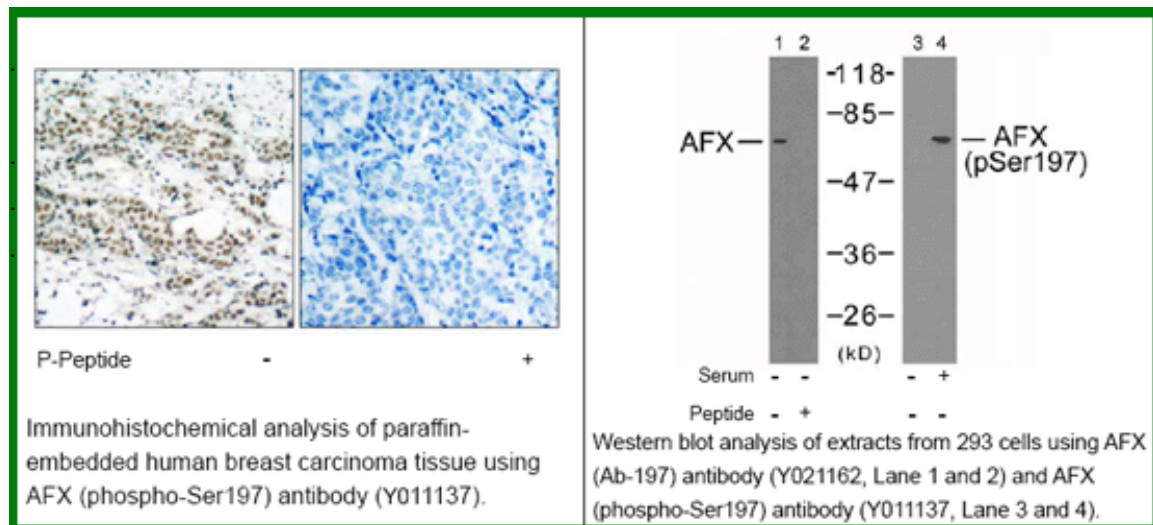
.Raised In: Rabbit

Purity: The antibody was affinity-purified from rabbit antiserum by affinity-chromatography using epitope-specific phosphopeptide. The antibody against non-phosphopeptide was removed by chromatography using non-phosphopeptide corresponding to the phosphorylation site.

Storage buffer: WB: 1:500~1:1000 IHC: 1:50~1:100

Form: Liquid

References : Di Maira G, et al. (2005)Cell Death Differ; 12(6): 668-77. Essers MA, et al. EMBO J 2004 Nov. 11. Brownawell AM, (2001) Mol Cell Biol; 21(10): 3534-46. Kops GJ, et al. (1999) Nature; 398(6728): 630-4.



For research use only

Antagene, Inc. Toll Free: 1-866-964-2589, Fax: 1-888-225-1868, info@antageneinc.com,
www.antageneinc.com