



STAT3 (Phospho-Tyr705) Antibody

Cat. #ANTY011045

Species: Human, Mouse and Rat

Quantity: 100ug

Concentration: 100ug/100ul

Storage and Stability: Store at -20°C/1 year

Immunogen: The antiserum was produced against synthesized phosphopeptide derived from human STAT3 around the phosphorylation site of tyrosine 705 (A-P-YP-L-K).

Specificity: STAT3 (phospho-Tyr705) antibody detects endogenous levels of STAT3 only when phosphorylated at tyrosine 705.

Tested application: WB and IHC

Application Notes: Rabbit IgG in phosphate buffered saline (without Mg²⁺ and Ca²⁺), pH 7.4, 150mM NaCl, 0.02% sodium azide and 50% glycerol.

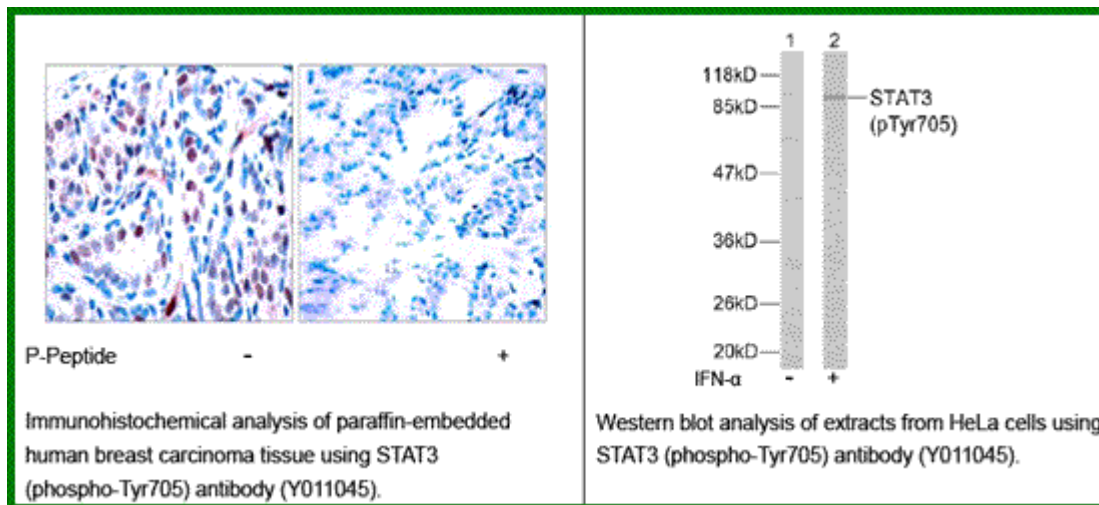
Raised In: Rabbit

Purity: The antibody was affinity-purified from rabbit antiserum by affinity-chromatography using epitope-specific phosphopeptide. The antibody against non-phosphopeptide was removed by chromatography using non-phosphopeptide corresponding to the phosphorylation site.

Storage buffer: WB: 1:500~1:1000 IHC: 1:50~1:100

Form: Liquid

References: Fan G, et al. (2003) J Biol Chem. 278(52): 52432-52436. Barry FA, et al. (2003) FEBS Lett. 553(1-2): 173-178. Welsh, et al. (1996) Trends Cell Biol. 6: 274-279. Srivastava A K, et al. (1998) Mol Cell Biochem. 182: 135-141.



For research use only

Antagene, Inc. Toll Free: 1-866-964-2589, Fax: 1-888-225-1868, info@antageneinc.com,
www.antageneinc.com