

Monoclonal Antibody to GLP

Cat. #: Mab-606023 (0.1mg)

Description:

Glucagon-like peptide-1 (GLP-1) is an incretin hormone secreted from enteroendocrine L cells in response to ingested nutrients. The closely related peptides glucagon-like peptide (GLP-1) and glucagon have opposing effects on blood glucose. GLP-1 induces glucose-dependent insulin secretion in the pancreas, while glucagon stimulates gluconeogenesis and glycogenolysis in the liver. Glucagon is processed from a large precursor, proglucagon, in a tissue-specific manner in pancreatic alpha-cells. The identification of a hybrid peptide acting as both a GLP-1 agonist and a glucagon antagonist would provide a novel approach for the treatment of type 2 diabetes.

Immunogen/Specificity:

Ni-NTA purified truncated recombinant GLP expressed in E. Coli strain BL21 (DE3)

Applications :

Western Blot: Dilution 1: 200- 1: 1,000

ELISA: Propose dilution 1: 10,000

Determining optimal working dilutions by titration test.

Formulation

Antibodies are purified by protein A affinity chromatography.

Reference:

1.Clark Q. Pan, Joanne M. Buxton, Stephanie L. Yung, et al.

J Biol Chem. 2006 Feb 27

2.Michael F. Crutchlow, Jee-Young Nina Ham, et al.
Int J Biochem Cell Biol. 2006;38(5-6):845-859

3.Andrew Young

Adv Pharmacol. 2005;52:151-71

Clone Number: 1B7B4

Isotype: IgG1

Species: Human

Storage and Stability: stored at -20 C

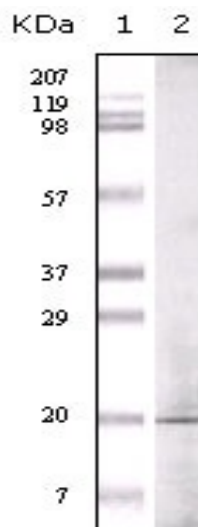


Figure 1: Western blot analysis using anti- human GLP monoclonal antibody against truncated GLP recombinant protein.