

Monoclonal Antibody to EphA1

Cat. #: Mab-606022 (0.1mg)

Description:

EPH receptor A1 (EphA1), with 976-amino acid protein (about 107 kDa), belongs to the ephrin receptor subfamily of the protein-tyrosine kinase family. The Eph subfamily represents the largest group of receptor protein tyrosine kinases identified to date and their ligands, the ephrins, can be subdivided into two major subclasses, ephrin-A and ephrin-B. Interaction of Eph receptor tyrosine kinases with their membrane bound ephrin ligands initiates bidirectional signaling events that regulate cell migratory and adhesive behavior, particularly in the nervous system. They have been implicated in various developmental processes, including axonal guidance, angiogenesis, morphogenesis and carcinogenesis.

Immunogen/Specificity:

Ni-NTA purified truncated recombinant EphA1 expressed in E. Coli strain BL21 (DE3)

Applications :

Western Blot: 1: 200- 1: 1,000

IHC^{IF}: 1: 200- 1: 1,000

IHC^{IF}: 1: 200- 1: 1,000

ELISA: Propose dilution 1: 10,000.

Determining optimal working dilutions by titration test.

Formulation

Antibodies are purified by protein A affinity chromatography

Reference:

1. Shannon L. Duffy, Kirsten A. Steiner, Patrick P.L. Tam

Gene Expr Patterns. 2006 Feb 6;

2. Elena B. Pasquale.

Nat Rev Mol Cell Biol. 2005 Jun; 6(6): 462-75

Clone Number: 5D2D1

Isotype: IgG1

Species: Human

Storage and Stability: stored at -20 C

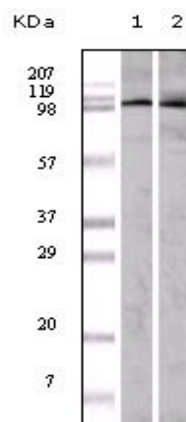
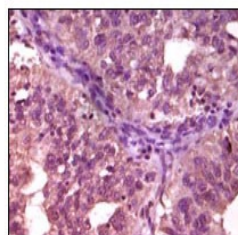
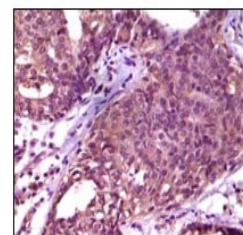


Figure 1: Western blot analysis of A549 (1) and HeLa (2) cell extracts with EphA1 antibody.



Human ovary carcinoma



Human breast carcinoma

Figure 2: Immunohistochemical analysis of paraffin-embedded Human ovary carcinoma and breast carcinoma tissue, showing cytoplasmic localization using EphA1 antibody with DAB staining.