



## Polyclonal Antibody to KSHV ORF8

Cat. #: Pab-6050501 (0.1mg)

### Description:

Kaposi's sarcoma-associated herpesvirus (KSHV) belongs to the gamma-(2)-herpesvirus subfamily and has been closely linked to the Kaposi's sarcoma, primary effusion lymphoma (PEL) and multicentric Castlemann's disease. The genome of KSHV is 165-170 kb and contains at least 88 open reading frames. KSHV ORF8 is a virion envelope-associated protein. Akula et al (2003) report it acts as a Glycoprotein B mediated signaling during virus entry. This Glycoprotein possesses the Arg-Gly-Asp (RGD) motif and utilizes alpha3beta1 integrin as one of the receptors for its entry into the target cells.

### Immunogen/Specificity:

Synthetic peptide, corresponding to amino acids sequence of KSHV ORF8.

### Applications :

Anti-KSHV ORF8 polyanitbody recognizes specific in TPA-induced BCBL-1 cell lysate by the Western Blot.

Western Blot: Dilution 1: 500- 1000

Determining optimal working dilutions by titration test.

Formulation  
Rabbit serum.

### Reference:

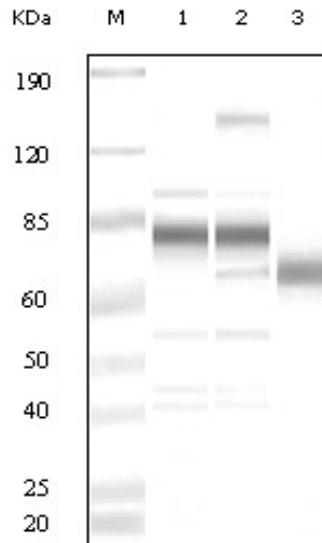
1. James J. Proc. Natl. Acad. Sci Vol. 1993, pp. 14862-14867.
2. Wang FZ. J Virol. 2003 Mar; 77(5):3131-47.

Clone Number:

Isotype: IgG1

Species: Human

Storage and Stability: stored at -20 C



**Figure 1.** Western blot analysis using monoclonal antibody to KSHV k&a against 1) Uninduced BCBL-1; 2) TPA-induced BCBL-1 and 3) purified virion.